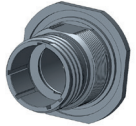


PLATING

WHAT IS IT?

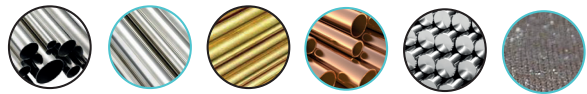


Apply a coating to machined parts: connectors, contacts, boxes...

In order to add new properties:

- 1 Corrosion resistance
- 2 Electrical conductivity
- 3 Self-repair
- 4 Lubrification
- 5 Aesthetic aspect

THE MATERIALS PROCESSED



Aluminium Stainless steel Brass Copper Steel Composite

THE PROPOSED TREATMENTS

- Cadmium plating (green, white, dichromate) _____
- Chemical nickel plating _____
- Electrolytic nickel plating _____
- Silvering in a barrel _____
- Copper plating, nickel plating and barrel plating _____
- Nickel plating, gold plating, tin plating of cut contacts _____
- Passivation of stainless steels _____
- Composite metallization _____
- Black Nickel _____
- Zinc Nickel Black _____



➤ APPLICATION PROCEDURES: barrel, rack or continuous

Amphenol SOCAPEX

THE PLATING WORKSHOP



25 PEOPLE

8x3

PRODUCTION



LABORATORY

Bath analysis and physico-chemical station + R&D



SUPPORT SERVICES

Scheduling
Methodology
Quality

THE CONTROL OF THE COATINGS

- Adhesion
- Appearance
- Thickness



The means of control:

- X-ray fluorescence devices
- Binocular
- Salt fog chamber
- Potentiostat



DID YOU KNOW ?



➤ The workshop makes cadmium deposits and is authorised by [ECHA](#) (European Chemicals Agency) until 2029 to use Chromium 6 (Cr6+) and thus offer green & dichromated cadmium.



➤ A R&D team is developing new coatings that are more respectful of the environment (Zinc Nickel) and optimizes the process of existing routings.

MANAGEMENT AND PROCESSING OF WASTE

Integrated physico-chemical station

- 15m³ of water per day
- Continuous monitoring of discharges

