

# SLG 419AR

Circular connectors "SHOW-BIZ"

**ROHS VERSION**  
• Black coating



## CHARACTERISTICS

- 2x6 contacts are used to provide power and 7 socket first mate last break earth contacts have a grounding function.
- In this way, each equipment has its own ground.
- The 7 grounding contacts are identified from the others by their plating, in order to improve the cabling process and also to allow a quick visual differentiation between standard SL419AR and SLG419AR connectors.
- As for SL Series, all solder sockets are protected by a closed entry to warranty an outstanding safety in use.
- Available in female receptacle and in line female receptacle.
- Available in solder and crimp versions
- ROHS version: Black coating



Panel Mount Female Receptacle:  
Solder contacts: **SLGEF419AR**  
Crimp contacts: **SLXGEF419AR**



Female Inline Receptacle:  
Solder contacts: **SLGFFDR419AR**  
Crimp contacts: **SLXGFFDR419AR**

## DESCRIPTION

SLG419AR connector, derived from the SL series, has been developed to meet the new requirements of the industrial market as far as safety of the user and of the equipment are concerned. SLG419AR connectors provides 19 solder or crimp termination contacts (size 12) which accept each 25 A.

SLG419AR is different from the standard version by its 7 sockets which are located in the centre of the insert to ensure the «first mate last break» fonction.

## 7 first mate last break earth contacts

## APPLICATIONS

- Power supplies of 6 brand-lights for entertainment applications.
- Power supplies with independent grounding.

SLG 419AR



**Amphenol**

## Mechanical characteristics

- Aluminium alloy molded shells
- Mating by screwing system
- Alkyde inserts for solder version / Neoprene inserts for crimp version
- Gold plated copper alloy machined contacts (gold plated on nickel underplate for power contacts, electrolytic nickel plated for grounded contacts)
- Close entry female contacts with solder version
- Reinforced mating screw
- Temperature range: -40°C to 85°C for solder version / -55°C to 125°C for crimp version

## Electrical characteristics

- Contact gauge AWG: 12
- Nominal current: 25 A
- Contact resistance < 0.002 Ohm
- Solder pot internal diameter: 2.5 mm
- Diameter over conductor for crimp contacts: mini = 1.7mm / max = 2.45mm

## Contact arrangement electrical characteristics

- Test voltage at sea level: 1750 Vrms for solder version / 2800 Vrms for crimp version
- Working voltage in accordance with NF C 20-040, environmental conditions II: 400 Vrms
- Conform to new USITT's specifications (American governmental agency)

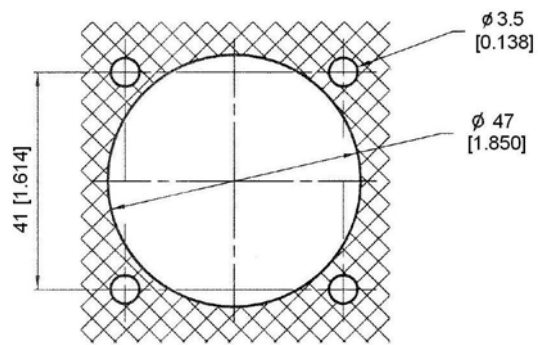
## Accessories

- Sealing Sleeve (for inlines): **43457**
  - Cap for female panel mount receptacles: **SLBEF4B**
  - Cap for female inline receptacles: **SLBFFR4B**
- NB** : Sealing sleeves and caps are ROHS compliant.

### Cabling tools for crimp version:

- Crimping plier: **809857**  
(Mil. P/N : **M22520/1-01**)
- Locator / Positioner: **TP943**
- Controlling gauge: **809907**  
(Mil. P/N : **M22520/3-1**)
- Insertion tool: **141900**
- Removal tool for male contacts: **21746**
- Removal tool for female contacts: **21745**

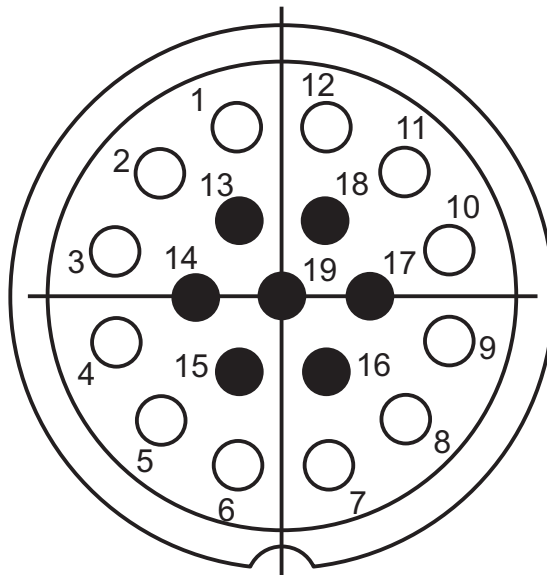
## Panel drilling for panel mount receptacle



**NB:** Please see page 3 of SL61 datasheet for outside dimensions of female panel mount and inline.

## Insert arrangement

Mating face view of the female insert



- First mate last break contact

### Inline receptacle and Plug (backshell sets included)

<b>SL series</b>	<b>SL</b>		<b>G</b>	<b>D</b>	<b>F</b>	<b>F</b>	<b>DR</b>	<b>419AR</b>
Contact Termination:								
Blank: solder contacts								
X: crimp contacts								
G: 7 first mate last break earth contacts (for 419AR only)								
Shell Finish:								
D: black coated - non conductive (ROHS compliant)								
Blank: white cadmium plated (non ROHS)								
Shell:								
F: mobile plug or inline receptacle								
Type of contact:								
F: Female								
Shell style:								
DR: inline receptacle + straight backshell								
D: plug + straight backshell								
C: plug + right angle backshell								
Contact arrangement 419AR								

### Body of Plug and Inline receptacle (backshell sets not included)

<b>SL series</b>	<b>SL</b>		<b>G</b>	<b>D</b>	<b>B</b>	<b>F</b>	<b>R</b>	<b>419AR</b>
Contact Termination:								
Blank: solder contacts								
X: crimp contacts								
G: 7 first mate last break earth contacts (for 419AR only)								
Shell Finish:								
D: black coating - non conductive (ROHS compliant)								
Blank: white cadmium plated (non ROHS)								
Shell:								
B: mobile plug or inline receptacle								
Type of contact:								
F: Female								
Shell style:								
R: inline receptacle								
Blank: plug								
Contact arrangement 419AR								

### Right angle and straight backshells

Connector Size	Backshell with cable-clip P/N			
	straight		right angle	
	black (non conductive)	green cadmium (conductive)	black (non conductive)	green cadmium (conductive)
<b>40</b>	47380N	21461N	47384N	21465N

- Green backshell (conductive finish) are equipped with conductive clamping pads.
- Black versions are ROHS.

### Panel mount Receptacle and Receptacle with locking ring

<b>SL series</b>	<b>SL</b>		<b>G</b>	<b>D</b>	<b>E</b>	<b>F</b>	<b>419AR</b>
Contact Termination:							
Blank: solder contacts							
X: crimp contacts							
G: 7 first mate last break earth contacts (for 419AR only)							
Shell Finish:							
D: black coating - non conductive (ROHS compliant)							
Blank: white cadmium plated (non ROHS)							
Shell:							
E: Receptacle or receptacle with coupling ring							
Type of contact:							
F: Female							
Shell style:							
Blank: panel mount receptacle							
E: receptacle with coupling ring							
Contact arrangement 419AR							

Do not hesitate to contact us for further information



# Amphenol

Amphenol Socapex

Mil/Aero & Industrial Business Unit

948, Promenade de l'Arve - BP 29

F - 74311 Thyez Cedex

Tel.: +33 (0) 4 50 89 28 00 - Fax: +33 (0) 4 50 96 19 41

<http://www.amphenol.com>

Sales office

Tel.: +33 (0) 1 49 05 30 00 - Fax: +33 (0) 1 49 05 30 43