



<b>Avis de Modification Produit / Process</b> <i>Product / Process Change Notification</i>		<b>Référence / Reference</b>  <b>PCN 115848</b>	
		<b>Nb de pages / Nb of pages</b> 04	<b>Date de Diffusion / Issue Date</b> 01/10/2016
<b>Familles Produit / Product Families</b>	38999 series III TV35 21-48 backshell	<b>Références Concernées / Concerned Part Numbers</b>	173-621369-00 173-621165-00
<b>Origine / Origin</b>	<b>Modification produit/ Product modification</b>	<b>Diffusion / Distribution</b>	ALL CUSTOMERS

**Sujet / Subject**

Modification de design des raccords arrières TV35 21-48.  
*Design modification of TV35 21-48 backshells.*

**Modification / Nature of Change**

Amphenol Socapex vous informe de la modification de design des raccords arrières TV35 21-48 : le joint d'étanchéité rectangulaire bleu est remplacé par un joint torique circulaire rouge.

Il n'y a pas d'incidence fonctionnelle sur le produit.

Références concernées par la modification :

- 173-621369-00
- 173-621165-00

Pour plus d'informations vous pourrez contacter le support technique ([technicalsupport@amphenol-socapex.fr](mailto:technicalsupport@amphenol-socapex.fr))

*Amphenol Socapex informs you of design modification of TV35 21-48 backshells: rectangular cross section blue sealing gasket is replaced by circular cross section red sealing O-ring.*

*There is no any functional impact on the product.*

*Concerned references :*

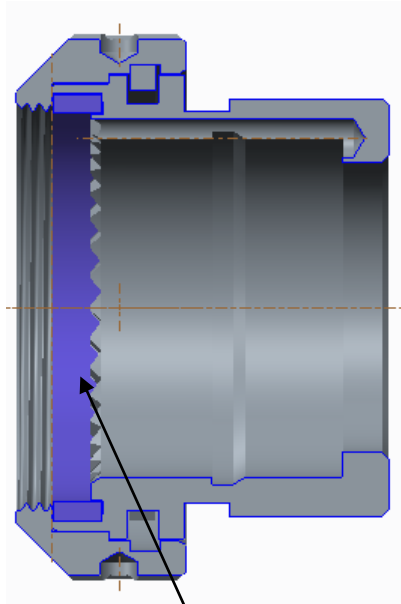
*Assemblies :*

- 173-621369-00
- 173-621165-00

*For more information, please contact the technical support ([technicalsupport@amphenol-socapex.fr](mailto:technicalsupport@amphenol-socapex.fr)).*

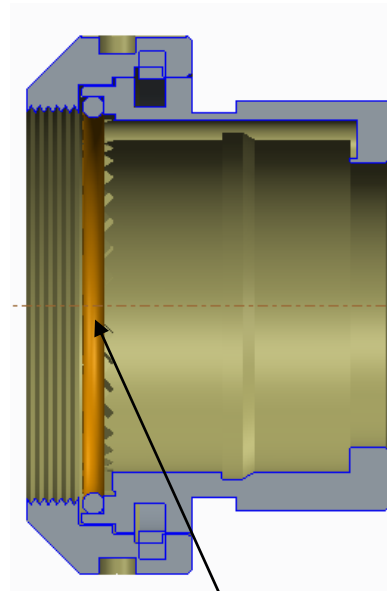
## Comparison Former & New TV35 21-48 backshells

Former TV35 21-48 design



Blue rectangular seal

New TV35 21-48 design



Red O'ring

**Références concernées et date / Affected part number and implementation date**



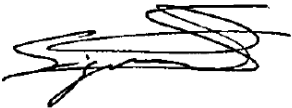
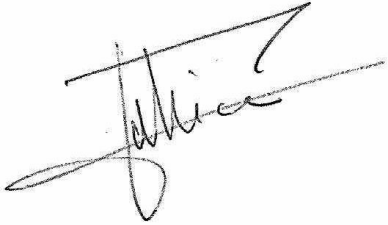
<b>Famille / Family</b>	<b>Références / Part Numbers</b>	<b>Date / Date</b>
38999 series III TV35 21-48 backshell	173-621369-00 173-621165-00	01/10/2016

**Personne à contacter pour plus d'information / Person to contact for more information**

Support technique / *Technical support*

[technicalsupport@amphenol-socapex.fr](mailto:technicalsupport@amphenol-socapex.fr)

**APPROBATIONS / Approvals**

<b>Engineering</b>	B. Mane 	<b>Marketing</b>	N. Martemianova 
<b>Quality</b>	S. Siguret 	<b>Industrial</b>	C. Jullian 

S.A.S. au capital de 1 536 800 Euros – RCS Bonneville – SIREN 035 650 167 – APE 321 A – TVA : FR 59 035 650 167