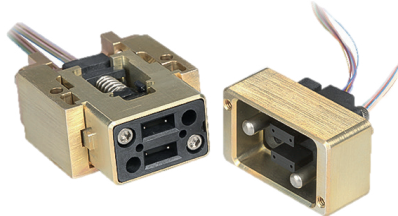


## VITA 66.1 and 66.4

### Blind-mate optical MT COTS interconnect system



#### Description

Amphenol's VITA 66 family of products are ruggedized blind-mate optical MT Module/Backplane connector systems designed to meet the VITA 66.1 and 66.4 open architecture specifications. These products can be utilized in VPX systems as defined per VITA 46 or as standalone blind-mate optical connector solutions. Amphenol's connector systems provide reliable high-speed connections for the most extreme commercial and military environments.

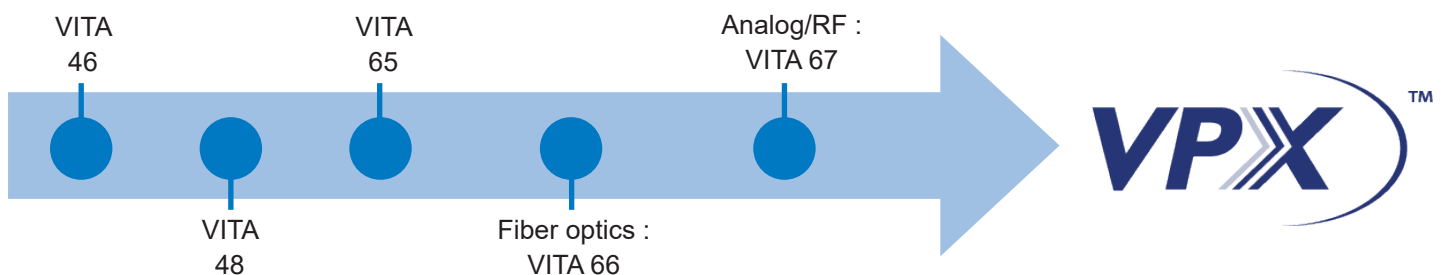
#### Benefits

- Spring-loaded floating MT ferrules
- Up to 24 fiber optic channels per MT ferrule
- Up to 48 fiber optic channels per connector
- No special tooling required for assembly

#### Features

- VITA 66.1 and 66.4 Spec compliant
- Robust technology designed for severe environments
- Multiple alignment guide features
- Supports industry standard MT ferrules

#### VPX Technology Roadmap



#### Online configurator & 3D model download

You can define references according your needs and download directly 3D models in several formats on PCB connectors product page in our website [www.amphenol-socapex.com](http://www.amphenol-socapex.com) or scan QR code :



#### Markets



Commercial Aerospace



Military Aerospace



Electronic Systems/C5ISR

# VITA 66.1 AND 66.4

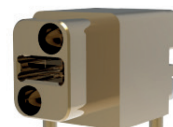
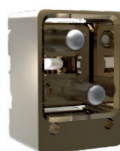
## VITA 66.1 AND 66.4 : How to order

Standard	Description	Module Connector Part Number	Backplane Connector Part Number
VITA 66.1	Standard 2MT	10-504637-004	10-504639-002
VITA 66.1	Double Density 4MT	10-504637-010	10-504639-008
VITA 66.1	Special Module 2MT / Spring Loaded 2MT Backplane	10-504637-013	10-504639-011
VITA 66.4	Standard 1MT	10-504637-008	10-504639-006
VITA 66.4	Double Density 2MT	10-504637-009	10-504639-007
VITA 66.4	Special Module 1MT / Spring Loaded 1MT Backplane	10-504637-012	10-504639-010

VITA 66.1 (2MT)



VITA 66.4 (1MT)



VITA 66.1 (4MT)



VITA 66.4 (2MT)



VITA 66.1 (Special MT)



VITA 66.4 (Special 1MT)



**MT ferrules are not supplied by Amphenol. Connectors are supplied less the MT ferrules.**