

## PS SERIES PSMDU350P2K-X DC/DC POWER SUPPLY



- Compact
- High density
- Single output

- DC/DC converter
- Up to 2000W

### Environmental Conditions

Designed to Meet MIL-STD-810F

#### Temperature

Methods 501.4 & 502.4  
Operating: -55°C to +85°C (at baseplate)  
Storage: -55°C to +125°C (ambient)

#### Altitude

Method 500.4  
Procedure I – Storage/Air transport:  
up to 70,000 ft. (non-operational)  
Procedure II – Operation/Air Carriage:  
up to 40,000 ft. (operational)

#### Humidity

Method 507.4  
Up to 95% RH

#### Vibration

Method 514.5  
Procedure I, Category 24  
General minimum integrity exposure  
IAW Figure 514.5C-17  
1 hour per axis.

#### Shock

Method 516.5  
Procedure I  
20 g / 11 ms terminal peak sawtooth shock pulse

#### Salt Fog

Method 509.4

### Reliability

150,000 hours, calculated IAW MIL-HDBK-217F Notice 2 at +85 °C baseplate, Ground fixed conditions.

### Environmental Stress Screening (ESS)

Including random vibration and thermal cycles is also available. **Please consult factory for details.**

### Pin Assignment

Pin No.	Function	Pin No.	Function	Pin No.	Function
1	Signal RTN	10	VIN (+)	19	N/C
2	- SENSE †	11	VIN (+)	20	VIN (-)
3	N/C	12	N/C	21	N/C
4	N/C	13	N/C	22	N/C
5	N/C	14	Inhibit	23	VIN (+)
6	N/C	15	+ SENSE †	24	N/C
7	VIN (-)	16	N/C	25	Chassis
8	VIN (-)	17	N/C		
9	N/C	18	N/C		

† Please inform factory if sense lines are required to be tied to the output from within, or if the remote sense compensation function will be used.

## Markets & Applications



Military (Airborne, ground-fix, shipboard), Ruggedized



Telecom, Industrial Power Supply

# PS SERIES: PSMDU350P2K-X

## Functions and Signals

### **INHIBIT**

The **INHIBIT** signal is used to turn the power supply ON and OFF. OPEN – will turn on the power supply.  
SHORT – between pin 14 and pin 1 will turn off the power supply. This signal is referenced to the **SIGNAL RTN** pin.

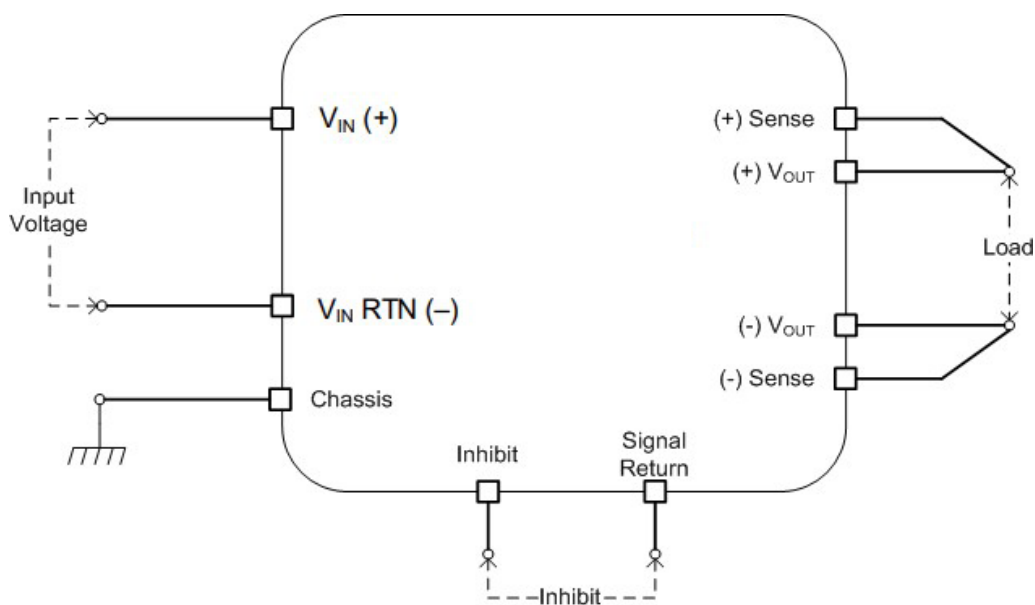
### **SENSE**

The **SENSE** is used to achieve accurate load regulations at load terminals (this is done by connecting the pins directly to the load's terminals).

The use of remote sense has a limit of voltage dropout between converter's output and load terminals of 2-10% of voltage output (up to 2V).

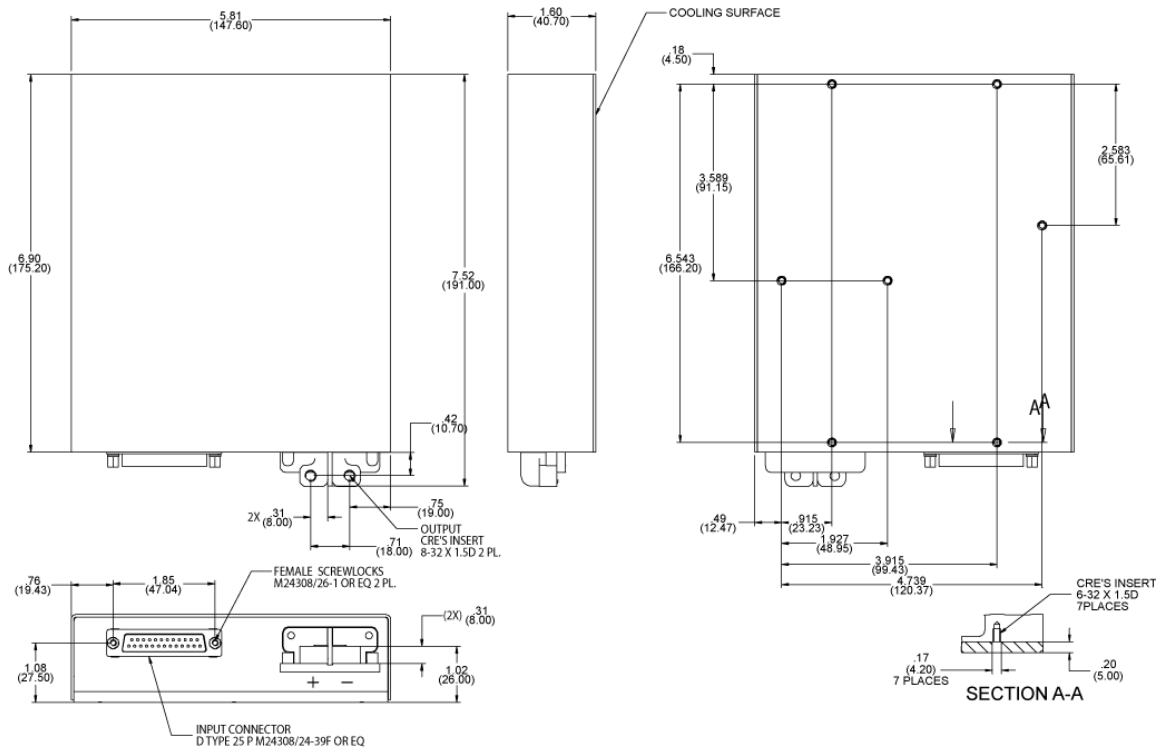
Please note that if Sense lines are not used the output may rise as much as 2V above nominal outputs. If sense lines are not to be used in the application, please inform factory for internal connection to output pins.

## Typical Connection Diagram

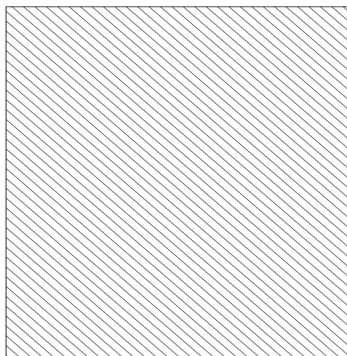


# PS SERIES: PSMDU350P2K-X

## Outline\* Drawing



## Heat Dissipation Surface



Dissipation Area  
40.08 in<sup>2</sup> (258.6 cm<sup>2</sup>)

### Notes

1. Dimensions are in inches [mm]
2. Tolerance is:  
.XX ± 0.025 in  
.XXX ± 0.010 in
3. Weight: Approx. 4.4 lbs [2 kg]

## Standard Configurations

Part number	Input	Output	
	Voltage range	Voltage	Current
PSMDU350P2K-0	220 to 350 Vdc	28 V <sub>DC</sub>	70 A
PSMDU350P2K-1	220 to 350 Vdc	28 V <sub>DC</sub>	70 A
PSMDU350P2K-2	220 to 350 Vdc	28 V <sub>DC</sub>	70 A

## Special Features

- **PSMDU350P2K-1:**
  - Parallel operation via output voltage droop. Voltage regulation is  $\pm 2\%$ .
- **PSMDU350P2K-2:**
  - Output voltage sense wires tied internally to the unit.

*Note: Specifications are subject to change without prior notice by the manufacturer*