

LC FTV

Fiber Optic Solution - Transform your LC patchcord into an Environmental Connector



LC Field offers an easy system to upgrade from a standard to an environmental LC with no cabling operation for installation in field. Based on MIL-DTL-38999 series III type, plugs and receptacles are mated thanks to a Tri-Start thread coupling mechanism.

Main features

Main characteristics:

- Thread coupling, MIL-DTL-38999 series III type
- Shell size 19
- The LC Field offers an easy system to upgrade from a standard to an environmental LC.
- Sealed against fluids and dust (IP68)
- Shock, vibration proof

With the patented RJStop® system you can use a standard LC patchcord in a metallic plug which will protect it from shocks, dust and fluids.

No hazardous on-field cabling!

Mechanical characteristics:

- Number of Channels: 2
- Typical Insertion Loss: 0,5dB in MultiMode and SingleMode
- Durability 500 mating/unmating cycles (changes for <0,2 dB)

Environmental protection :

- Material and platings:
 - 48h - Aluminium shell with Nickel plating ✓
 - 500h - Aluminium shell with Black zinc nickel plating ✓
 - 500h - Aluminium shell with Olive drab cadmium plating ✓
 - 500h - Marine bronze shell ✓
- Operating temperature: -40°C to +85°C (-40°F to 185°F)

✓ : RoHS compliant



Markets & Applications



Railways



Base Station



Military Communication

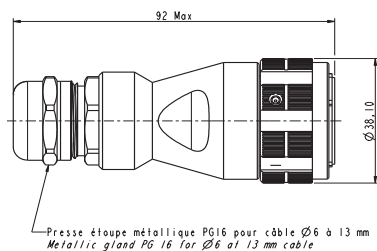


Naval

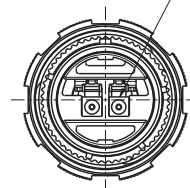
Plug

Plug – Shell type 6M

Part number type: **LCFTV 6M X X X**



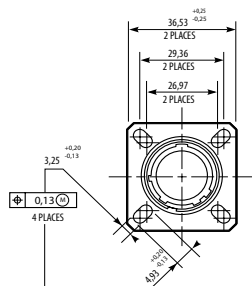
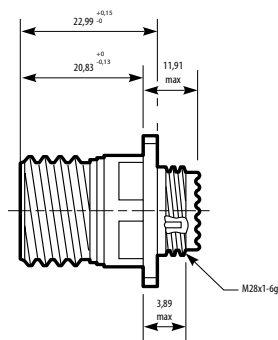
Connecteur LC Duplex (Non fourni)
LC Duplex connector (Not supplied)



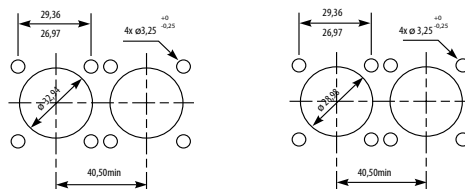
Receptacles

Square flange receptacle – Shell type 2

Part number type: **LCFTV 2 X X X**

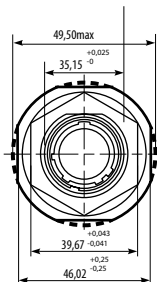
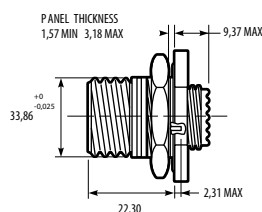


Panel Drilling

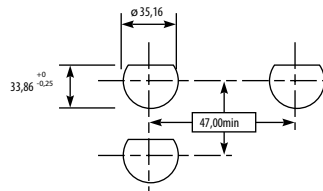


Jam nut receptacle – Shell type 7

Part number type: **LCFTV 7 X X X**

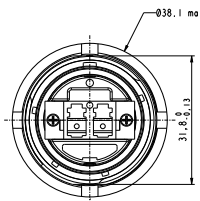
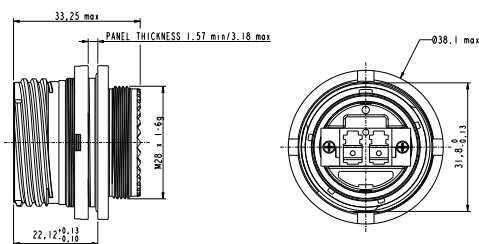


Panel Drilling

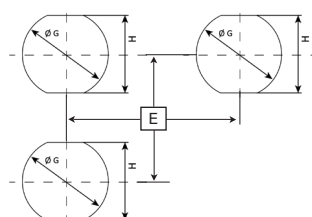


Reduced flange receptacle – Jam nut shell type 7

Part number type: **LCFTV 7 X X X F312**



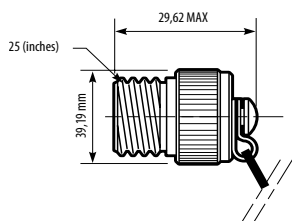
Panel Drilling



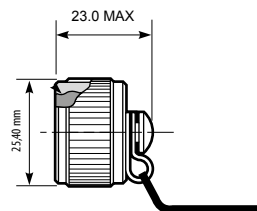
Accessories

Protective caps

Plug caps



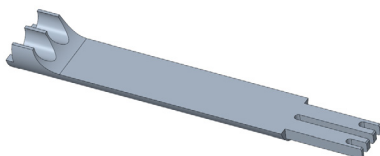
Receptacle caps



LC Field Tools

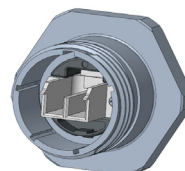
Mounting tools

LCFTV MO TOOL: LC FIELD Mounting tools



Dismounting tools

LCFTV DM TOOL: LC FIELD Dismounting tools (To dismount the LC you need to use both dismounting and mounting tools)



How to order - Connectors

1.	2.	3.	4.	5.	6.
Series	Shell type	Cable type	Shell finish	Polarization	Deviation
LCF TV	6M	D	N	N	F312









1. Series

LCF TV	Optical connector type
--------	------------------------

2. Shell type

Plug	Plug - Compatible for all LC PC and APC Duplex	
	6M	Plug with metal backshell and metal PG clamp
	Compatible for all LC PC Duplex (adapter blue color)	
	2	Square flange receptacle
	7	Jam Nut receptacle
	Compatible for all LC APC Duplex (adapter green color)	
	2A	Square flange receptacle
	7A	Jam nut receptacle
Receptacle without backshell		

3. Cable type

Only for plug		Cable gland		
Cable type	ø 1,6 mm	ø 2 mm	ø 2,8 mm	ø 6 to 13 mm
Flat duplex cable	D: 	F: 	H: 	
Duplex zipcord	E: 	G: 	I: 	
Tactical cable				J: 
T	Flat duplex cable for 1,6 mm - 2 mm - 2,8 mm + Duplex zipcord for 1,6 mm - 2 mm - 2,8 mm			
Only for receptacle (no backshell available for RECEPTACLE)				
0	Receptacle without backshell			

4. Shell finish

N	Nickel plated ✓
G	Olive drab cadmium
B	Bronze ✓
ZN	Black zinc nickel ✓
	✓ RoHS compliant

5. Polarization

N	Normal or A / B / C / D / E
---	-----------------------------

6. Deviation (only for receptacle)

F312	Reduced flange receptacle (only for jam nut receptacle)
------	---

How to order - Caps

1.	2.	3.	4.	5.	6.
Cap Series	Protective Cap type	Wire type	Series	Shell finish	Shell size
B	EC	N	TV	W	19

1. Cap Series

B	Cap Series
---	------------

2. Protective cap type

EC	For square flange receptacle
ER	For jam nut receptacle
F	For plug

3. Wire type

N	Nylon cord
Blank	Metallic chain

4. Series

TV	Series
----	--------

5. Shell finish

B	Bronze ✓
F	Electroless nickel plated, aluminium version ✓
W	Olive drab cadmium plated, aluminium version
ZN	Black zinc nickel ✓

6. Shell size

19	Corresponding connector shell size
----	------------------------------------

✓ RoHS compliant

Requested information to order LC Field Patchcord

Type of connector: Male /Female
 Type of fiber: 50/125, 62,5/125, 9/125
 Patchcord length: ex 10.5m
 Drawing: description of the product
 Contact us for other configuration.

Tools informations

Mounting Tools:
 LCFTV MO TOOL: LC FIELD Mounting tools
Dismounting Tools:
 LCFTV DM TOOL: LC FIELD Dismounting tools
 (To dismount the LC you need to use both dismounting and mounting tools)

Assembly video



Scan & Discover !

