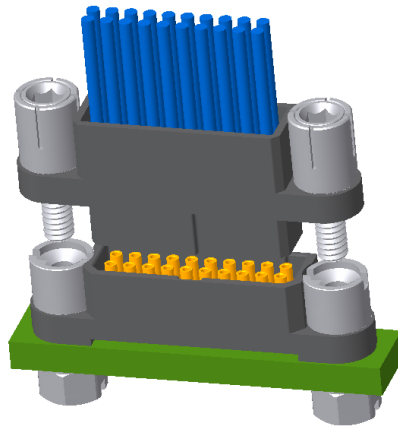




## TECHNICAL NOTE

### MHDAS : CRIMP CONTACT INSERTION/EXTRACTION INSTRUCTION



#### EXTERNAL DIFFUSION

Technical note n°: PCB-ER-016-Ext

Revision A, October 2023

Prepared by: Robin COURTIN  
*Business Division Avionics R&D Project Manager / Amphenol Socapex*

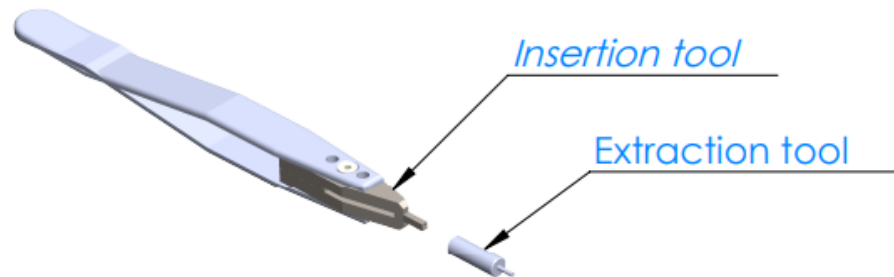
Approved by: Thomas CARLIER  
*Business Division Avionics Product Manager / Amphenol Socapex*

ISSUED BY:  
Amphenol Socapex  
948, Promenade de l'Arve – B.P. 29  
74311 Thyez Cedex - France  
Tél. : +33 (0) 4 50 89 28 00  
[www.amphenol-socapex.com](http://www.amphenol-socapex.com)

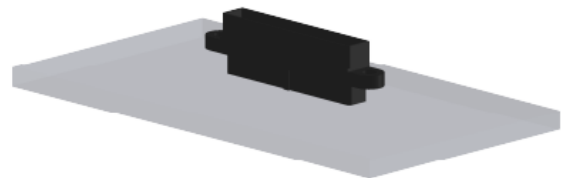
## 1. CRIMP CONTACT INSERTION INSTRUCTION

### 1.1. TOOL & PREPARATION

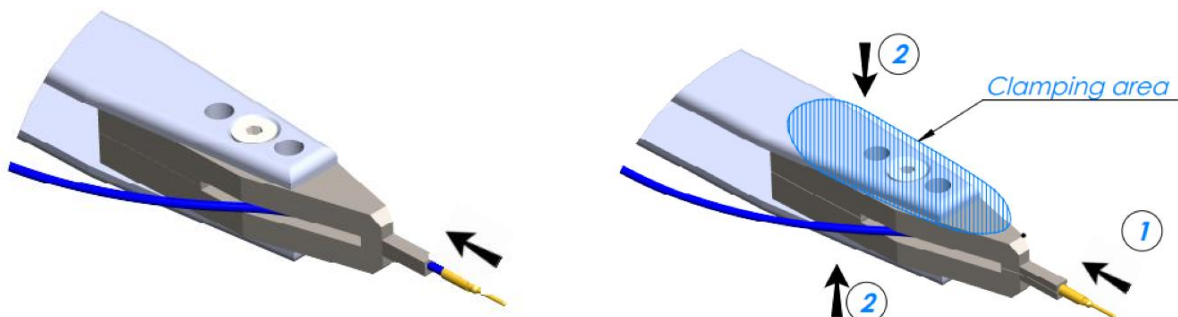
- ✓ Use specific MHDAS crimp contact insertion tool **MHDASODIEC**:



- ✓ Place the insulator on a flat surface, pressing on both extremities:

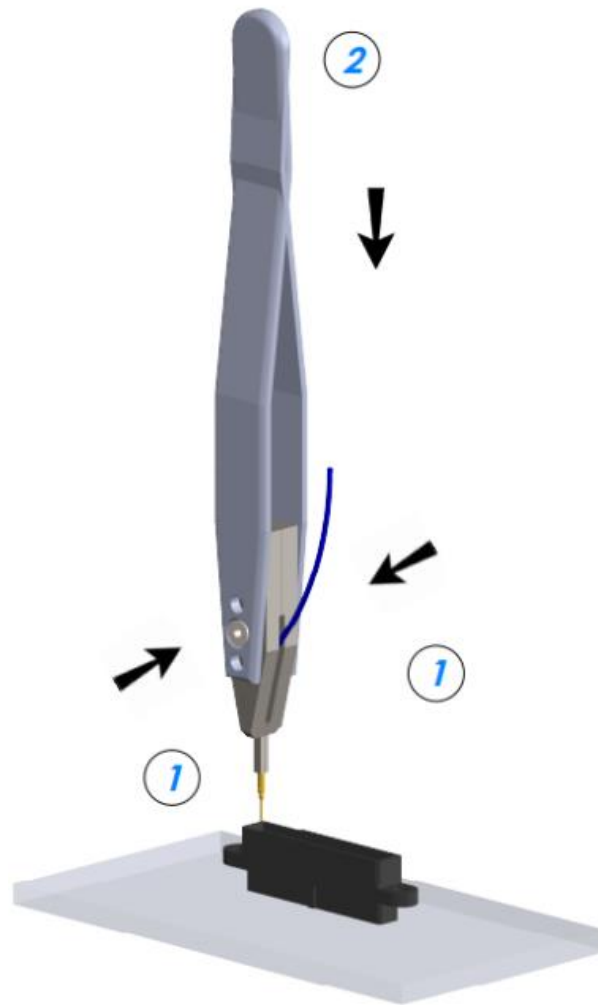


- ✓ Place the wire into the insertion tip, push the contact barrel against the tool (1) and grip the tool with your fingers (2):



### 1.2. INSERTION

- ✓ Keep the tool closed (1)
- ✓ Push on the tool to insert the contact into the insulator cavity (2), make sure you stay in the axis of the contact and the cavity.
  - ▶ Push the contact to the bottom of the cavity



### 1.3. CHECK

- ✓ Visual: Contact must have clearance with the housing, contact can rotate freely inside the housing
- ✓ Retention: pinch the cable and pull it gently