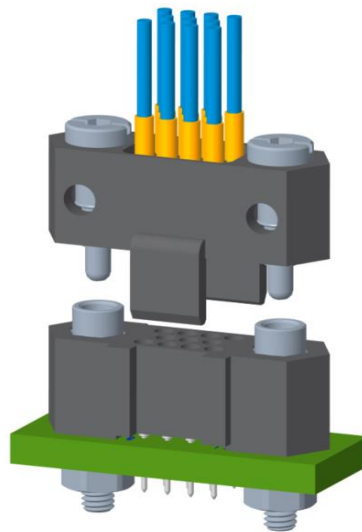


TECHNICAL NOTE

HDAS : CRIMP CONTACT INSERTION/EXTRACTION INSTRUCTION



EXTERNAL DIFFUSION

Technical note n°: PCB-ER-018-Ext

Revision A, October 2023

Prepared by: Matthieu GERVAIS
Business Division Avionics R&D Engineer / Amphenol Socapex

Approved by: Thomas CARLIER
Business Division Avionics Product Manager / Amphenol Socapex

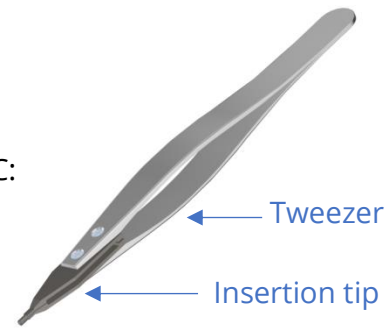
ISSUED BY:

Amphenol Socapex
948, Promenade de l'Arve – B.P. 29
74311 Thyez Cedex - France
Tél. : +33 (0) 4 50 89 28 00
www.amphenol-socapex.com

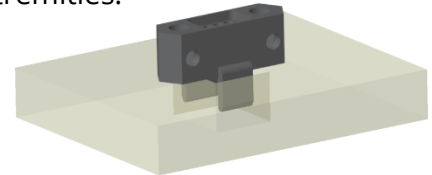
1. CRIMP CONTACT INSERTION INSTRUCTION

1.1.TOOL & PREPARATION

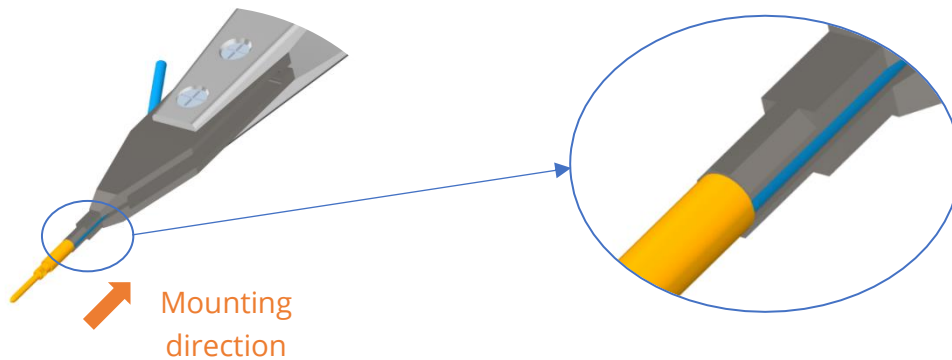
- ✓ Use specific HDAS crimp contact insertion tool HDAS ODI C:



- ✓ Place the insulator on a flat surface, pressing on both extremities:

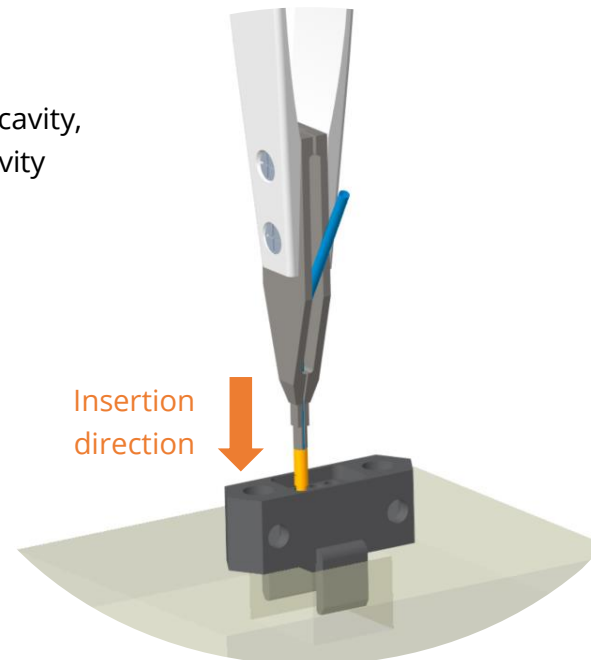


- ✓ Place the wire into the insertion tip and push the contact barrel against the tool:



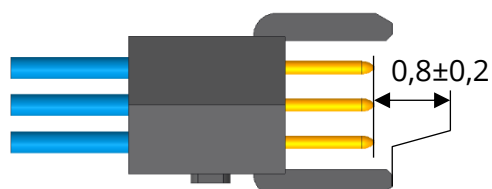
1.2.INSERTION

- ✓ Push on the tool to insert the contact into the insulator cavity, make sure you stay in the axis of the contact and the cavity
 - Push the contact to the bottom of the cavity



1.3.CHECK

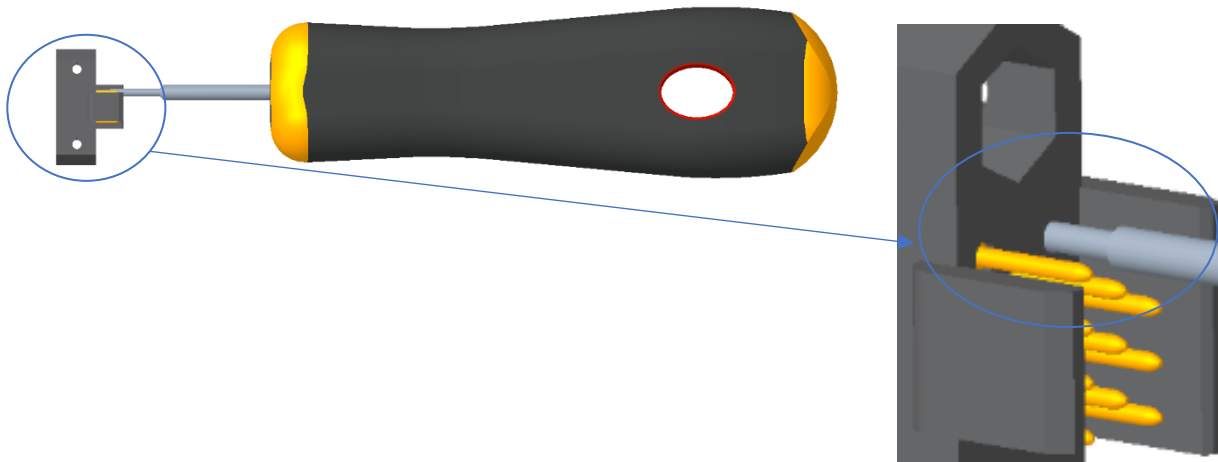
- ✓ Visual : the insulator must not have any cracks
- ✓ Retention : pinch the cable and pull it gently
- ✓ Insertion : measure the correct position of the contact in the cavity



2. CRIMP CONTACT EXTRACTION INSTRUCTION

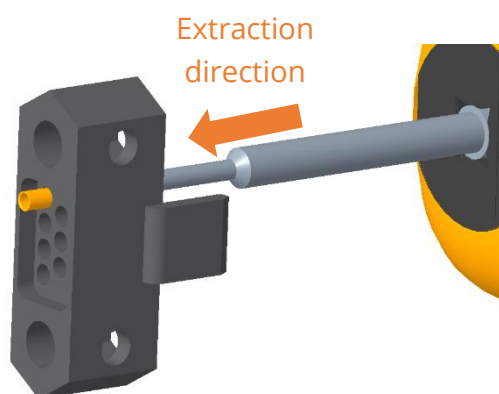
2.1. TOOL & PREPARATION

- ✓ Use specific HDAS crimp contact extraction tool HDAS ODE C:
- ✓ Place the tool over the contact and make sure first tool diameter is inside the insulator cavity:



2.2. EXTRACTION

- ✓ Push on the tool to extract the contact out the insulator cavity, make sure you stay in the axis of the contact and the cavity
 - Push the contact to the top of the cavity



2.3. CHECK

- ✓ Visual: the insulator must not have any cracks
- ✓ Retention: no retention of contact, it can be removed easily