

Amphenol SOCAPEX

PowerSafe

Derived from MIL-DTL-38999 Series III &
VG96944 Qualified



www.amphenol-socapex.com

OUR COMPANY



Proven excellence in interconnect solutions

- Since **1947**, Amphenol Socapex has prescribed, designed and manufactured reliable and innovative interconnection solutions for harsh environments, specializing in standard and customized electrical and fiber optic connectors, contacts, accessories and cabling solutions.
- Located in the **Mont Blanc region** of France and Pune in India, Amphenol Socapex serve customers in over 100 countries around the world.
- Amphenol Socapex is part of the leading supplier of interconnect systems **Amphenol**.



1400+
employees



142 M€
Net Sales 2023
70% Export - 30% France



Thyez, **France**
Pune, **India**



Our expertise has no boundaries

Integrated Production in France & India

- 24 000 m² manufacturing capacity on 2 sites
- Design and manufacturing centers in France and India
- State-of-the-art manufacturing technology

Our markets



Defense



**Commercial
Aerospace**



Space



Industry



TECHNOLOGIES & INNOVATION

Engineering Laboratory



Product testing and qualification expertise in many fields:

- Environmental, mechanical, electrical, chemical, climatic skills
- RF and fiber optics expertise

High-Speed Expertise



Strong expertise in high-speed signals

- 3D EM simulation software & EM models
- Time Domain and frequency domain

Materials Expertise



Focus on materials expertise and manufacturing techniques to produce faster, smaller and stronger products

- Advanced technology research and development: polymers, metals, platings, resins ...
- Cutting edge characterizations of interconnects: Radio Frequency, partial discharges ...
- 3D CAD mechanical software, simulation & analysis

Eco-responsibility



Sustainable environment approach, with pro-active management of regulations (REACH / RoHS / Conflict minerals...)

- New materials development, plating, and suitable processes
- Recycling and rational resources consumption

Our workshops



Our workshops located in France & India provide consistent quality adapted to your volume requirements.

Automation & Tooling : Tools for our different activities : molding, machining, assembly

Molding : Solid expertise in thermoplastic elastomer and thermoset molding

Machining : Manufacturing of cylindrical shells and rectangular shells

Screw Machining : Manufacturing of electrical contacts

Plating : Plating with cadmium, nickel, electroless nickel, silver, black zinc nickel, gold

Assembly : Connector and harness assembly (electrical & optical)

Our certifications

Product certifications : MIL-DTL38999, EN3645, EN3155, VG (VG95328, VG95319, VG96944, VG95218, VG96949)



Certified Management System



Certified Management System



Certified Management System



Certified Management System

Our memberships

Member of CMG (Connecting Manufacturing Group) Consortium

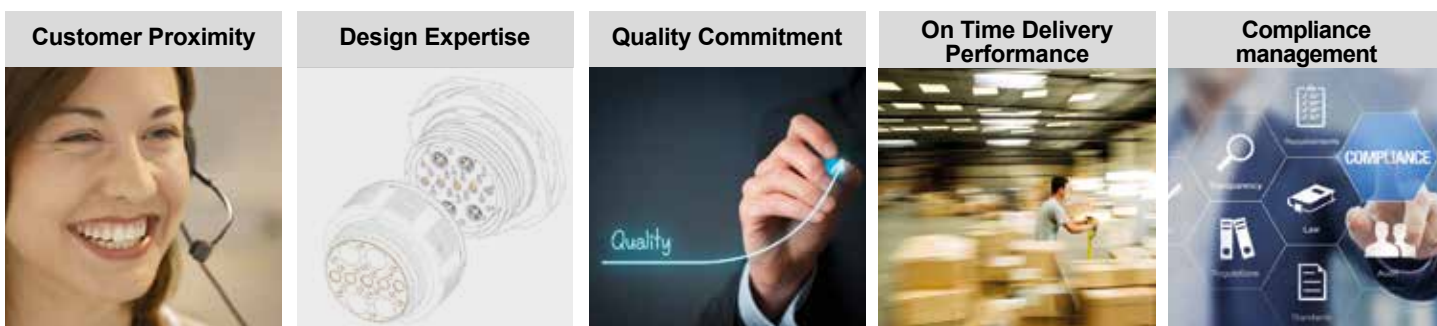


CUSTOMER EXPERIENCE



► We have a strong reputation for helping customers solve their toughest challenges. This approach of serving your needs is ingrained in our company – from our sales team to our product development engineers.




A partner you can trust



Buy our solutions

You can access our solutions through our global network of sales offices or through our distributors.

Field Sales Team :

-  10 in France
-  15 in Europe
-  100+ in North America and rest of the world.
- 5 Business Development Managers supporting local sales force Europe, North America and the rest of the world

-  **Technical Advisement & Multilingual Customer Service :**
- 20 people

Worldwide Distribution Network :

Our range of circular connectors, contacts, fiber optic connectors, PCB connectors and accessories are available thru our extensive distribution network.

It includes qualified distributors (QPL approved) for assembling MIL-DTL-38999 & derivatives and PT/451 (VG95328) connectors.



[Check our product inventory](#)



[Product Selectors & 3D Files](#)



NEW



OUR HISTORY

1947



- Socapex creation in Suresnes, France
- 1st radio connector

1956-57



- Manufacturing unit in Cluses (74), France
- Thomson-CSF becomes primary shareholder

Early 1960's



- 1st board level connectors: HE8
- 1st "licence Bendix" manufactured connectors
- SL Series

1973



- New factory in Thyez (74) France with 250 people, 13 000m²

1975



- Production of 38999 connectors

1986

Amphenol
Socapex

- Amphenol becomes primary shareholder

1995-96



- Expanded Beam connector CTOS launch
- Headquarters transferred to Thyez

2004



- RJ Field Electronica launch, "Award"

2005



- New factory in Pune, India

2010's



- LuxBeam™ and HDAS launch

2014-2017



- New workshops :
- Cable Assembly & Contact Manufacturing workshop

2019



- Increased manufacturing capacity with 2nd building in Pune, India

2022



- Harness in the box solution launch

Today & tomorrow



- New technologies :
- Investment in automation & technical expertise



- Amphenol SOCAPEX joins the "Convention des Entreprises pour le Climat".
- Our goal: to accelerate our transition to a more sustainable operation.

POWERSAFE / VG96944 - GENERAL CHARACTERISTICS

Power connector qualified VG96944 and designed for user safety

Description

PowerSafe connectors are derived from MIL-DTL-38999 Series III connectors and dedicated to high power supply in harsh environments. These connectors provide the user with, the highest user safety, shielding effectiveness & environmental performances. PowerSafe connectors follow the European standard for power equipment DIN EN 61984 (former VDE 0627).



Markets

C5ISR - Battlefield Communication
 Ground Vehicles
 Military Avionics
 Missile Avionics
 Navy
 Harsh Industrial Environment



Applications

Power connectors deployed on the field (drums)
 Electrical power generator



C5ISR



Military
Aerospace



Ground
Vehicle



Navy



Industrial

POWERSAFE / VG96944 - GENERAL CHARACTERISTICS

Power connector qualified VG96944 and designed for user safety

Main features

TWO INSERTS TYPES WITH DIFFERENT CHARACTERISTICS

- “E” inserts – up to 200°C & CTI (Comperative Tracking Index) <100

Available in Amphenol Proprietary designations only

- “V” inserts – VG96944 compliant – up to 150°C & CTI between 175 & 400 (Material Group IIIa)

Available in VG designations & Amphenol Proprietary ones

FIRST MATE/LAST BREAK: one earth contact directly linked to the shell, stays in place even in case of overheats.

LAST MATE/FIRST BREAK: one pilot contact with a breaking capacity (brings the information to a relay to turn on/off the power).

These features protects the user even if the connectors are mated or unmated. Amphenol recommends to connect / disconnect connector when unloaded.

IP28 WHEN UNMATED, IP68 WHEN MATED

HIGH ROBUSTNESS AND EXCELLENT ENVIRONMENTAL PERFORMANCES.

SEVERAL MATERIALS & PLATING

- Aluminum (Olive drab Cadmium, Nickel, Black Zinc Nickel, Tin Zinc platings)
- Marine Bronze
- Stainless steel (Passivated, Nickel plated upon request)

EMI/RFI PROTECTION : Shell to shell bottoming and grounding fingers on the plug shell

ACCESSORIES:

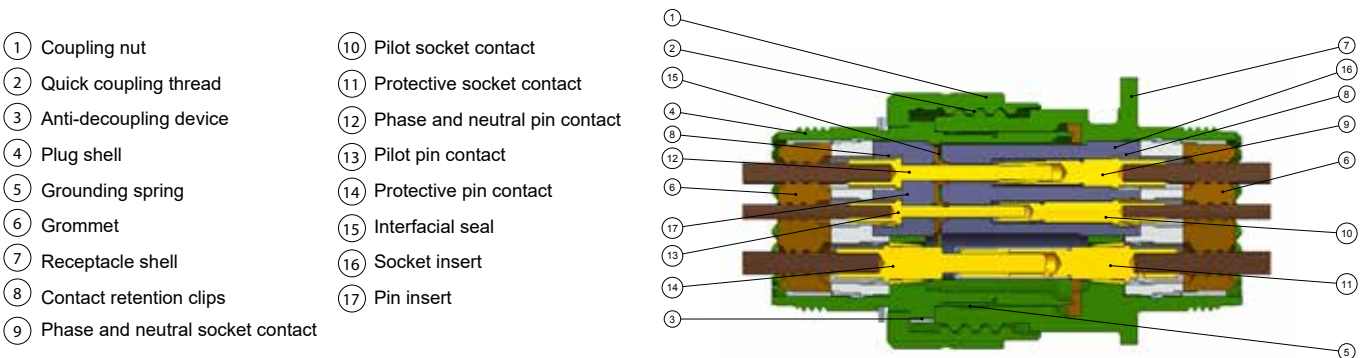
- Caps: compatible with MIL-DTL-38999 Series III caps.
- Backshells: compatible with AS85049 backshells for MIL-DTL-38999 Series III connectors, VG95319-1011G, as well as TV35 & TVNSA backshells.

Same panel drilling as standard MIL-DTL-38999 Series III connectors.

Added benefits

- PowerSafe is compliant with **IP2X Electrical Safety standard**, which guarantees touch-proof protection of live parts.
- Qualified according the most stringent standard **VG96944** (applicable to Aluminum with Olive Drab Cadmium or Tin Zinc finish and Marine Bronze versions only).
- Safety use design following **DIN EN-61984 (former VDE 0627)**.

Concept



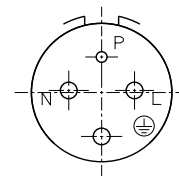
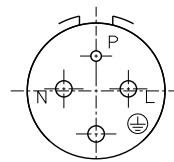
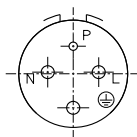
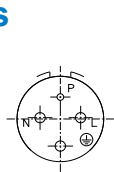
POWERSAFE / VG96944 - LAYOUTS & ELECTRICAL CHARACTERISTICS

Amphenol **PowerSafe** range offers 6 contact arrangements to fit all your power needs, with single-phase & three-phase layouts, and a choice of 2 insert materials for each layout depending on the need :

→ **V** inserts : developed according to VG96944 standard with a material less impacted by the disconnection under load. Able to withstand a maximum temperature of 150°C & have a CTI between 175 & 400 (Material Group IIIa)

→ **E** inserts : using the same material than our 38999 series connectors and able to withstand a temperature up to 200°C

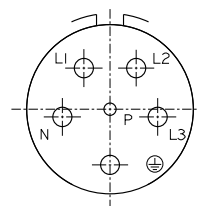
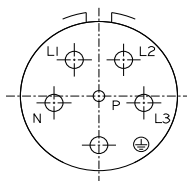
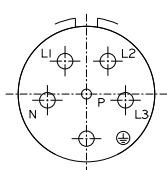
Single-Phase Layouts



V insert	13-V4	15-V4	21-V4	23-V4
E insert	13-E4	15-E4	21-E4	23-E4
Pilot contact (P)	1 Size 20	1 Size 16	1 Size 16	1 Size 16
Phase & neutral (N & L)	2 Size 16	2 Size 12	2 Size 6	2 Size 4
Protective contact (PE)	1 Size 16	1 Size 12	1 Size 6	1 Size 4

Contact Arrangements	Pilot contact - P		Phase, Neutral and Protective contact - N, L & PE		Test voltage AC *
	Contact rating	Operating Voltage AC or DC	Contact rating	Operating Voltage AC or DC	
13-V4 / 13-E4	0,5 A	60 V	16 A	250 V	1500 V
15-V4 / 15-E4	0,5 A	60 V	25 A	250 V	1500 V
21-V4 / 21-E4	0,5 A	60 V	63 A	500 V	2500 V
23-V4 / 23-E4	0,5 A	60 V	100 A	500 V	2500 V

Three-Phase Layouts



V insert	17-V6	23-V6	25-V6
E insert	17-E6	23-E6	25-E6
Pilot contact	1 Size 16	1 Size 16	1 Size 16
Phase & neutral	4 Size 12	4 Size 8	4 Size 6
Protective contact	1 Size 12	1 Size 8	1 Size 6

Contact Arrangements	Pilot contact - P		Phase, Neutral and Protective contact - N, L1, L2, L3 & PE		Test voltage AC *
	Contact rating	Operating Voltage AC or DC	Contact rating	Operating Voltage AC or DC	
17-V6 / 17-E6	0,5 A	60 V	25 A	500 V	2500 V
23-V6 / 23-E6	0,5 A	60 V	60 A	500 V	2500 V
25-V6 / 25-E6	0,5 A	60 V	63 A	500 V	2500 V

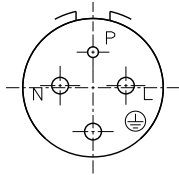
* : Test voltage in mated condition for Phase, Protective and Neutral pin & socket contacts, and Pilot pin contacts. Test voltage in unmated condition for Pilot socket contact only

POWERSAFE / VG96944 - LAYOUTS & ELECTRICAL CHARACTERISTICS

Layouts able to accomodate Temper Grip contacts & High current Pin

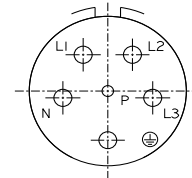


Single-Phase Layout



V insert	23-V4T
E insert	23-E4T
Pilot contact (P)	1 Size 16
Phase & neutral (N & L)	2 Size 4
Protective contact	1 Size 4

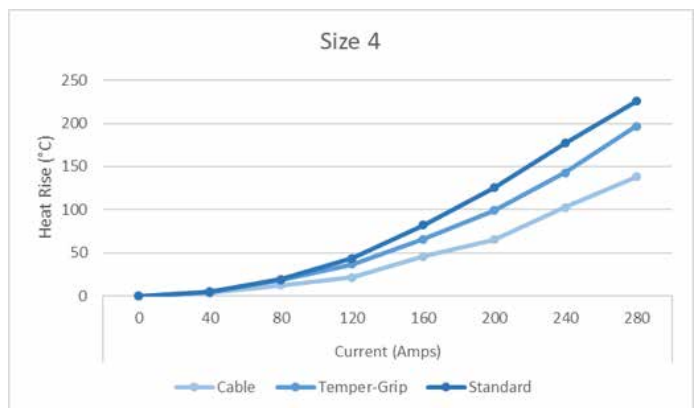
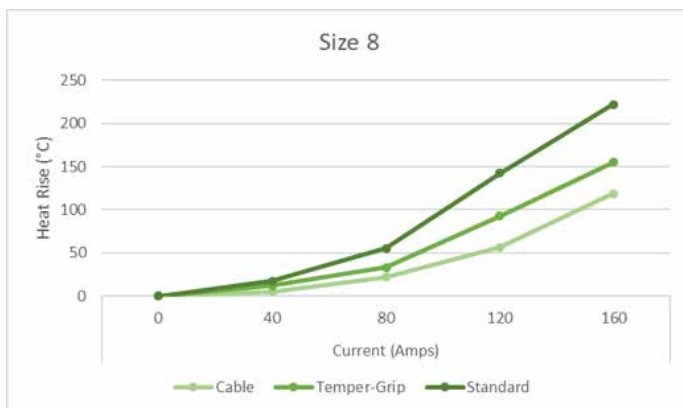
Three-Phase Layout



V insert	23-V6T
E insert	23-E6T
Pilot contact	1 Size 16
Phase & neutral	4 Size 8
Protective contact	1 Size 8

Contact Arrangements	Pilot contact - P		Phase, Neutral and Protective contact - N, L &		Test voltage AC *
	Contact rating	Operating Voltage AC or DC	Contact rating	Operating Voltage AC or DC	
23-V4T / 23-E4T	0,5 A	60 V	120 A	500 V	2500 V
23-V6T / 23-E6T	0,5 A	60 V	80 A	500 V	2500 V

Amphenol Socapex Temper-Grip socket contact series is a high-current technology designed for use in high-temperature applications and is available with most Amphenol connectors. Temper-Grip contacts can increase ampacity by up to 40 percent, allowing you to increase the value of your system or potentially downsize your cable size and the space you occupy on your panel. Temper-Grip contacts will far outlast the temperature extremes of the standard connectors they can go into and are perfect for any high-temperature custom connector applications. C



POWERSAFE / VG96944 - CHARACTERISTICS

Environmental characteristics

	Connectors with Proprietary inserts E	Connectors with VG96944 compliants inserts V
Temperature	-65 to +175°C (Olive drab cadmium, Black zinc nickel plating) -65 to + 200°C (Nickel plating, Marine Bronze, Stainless steel)	-65 to +150°C (all materials and platings)
Salt spray exposure	48h for Nickel plated Aluminum 500h for Olive drab cadmium, Black zinc nickel, Marine Bronze and Stainless steel	Test level 2 : 5% NaCl. 2h salt spray exposure and 22h storage in humid air repeated during 5 cycles
Sealing	IP28: - Finger test for socket contacts and socket inserts - Pressure water tight (48h, under 2m water)	IP28: - Finger test for socket contacts and socket inserts - Pressure water tight (48h, under 2m water)

Mechanical characteristics

	Connectors with Proprietary inserts E	Connectors with VG96944 compliants inserts V
Durability	500 mating cycles	500 mating cycles
Shocks	-	Half-sine, 500 m/s ² , 11 ms
Sine vibrations	60g from -55 +175°C (Olive drab cadmium) / + 200°C (Nickel)	-
Random vibrations	Per EIA-364-28	Per VG95319-2 (Spectrum 5 Hz to 500 Hz)
Insert material	Thermoplastic insert Silicone rubber grommet and interfacial seal	Thermoplastic insert Silicone rubber grommet and interfacial seal
Insulator material Comparative Tracking Index	<100V	<400V
Contacts	Crimp, removable contacts Gold plating for pilot contact and silver plating for protective, phase and neutral contacts	Crimp, removable contacts Gold plating for pilot contact and silver plating for protective, phase and neutral contacts
Protective contact Resistance	≤100 mΩ	≤100 mΩ

Contact retention force

Contact Size	20	16	12	8	6	4
Maximum load (N)	67	111	111	111	111	150

POWERSAFE / VG96944 - HOW TO ORDER - PROPRIETARY DESIGNATIONS

1.	2.	3.	4.	5.	6.	7.	
Series	Shell type	Crimp contacts	Class	Contact arrangement	Contact gender	Keying	Deviation
TV	P00	R	W	13-E4	P		-

1. Shell type

	Shell type	Temperature	Associated materials and platings for E inserts	Associated materials and platings for V inserts
06	Straight plug	+175°C*	W, ZN, ZR, TZ	W, ZN, ZR, TZ, F, K, S, B
S06		+200° C	F, K, S, B	-
P00	Square flange receptacle	+175°C*	W, ZN, ZR, TZ	W, ZN, ZR, TZ, F, K, S, B
PS00		+200° C	F, K, S, B	-
07	Jam nut receptacle	+175°C*	W, ZN, ZR, TZ	W, ZN, ZR, TZ, F, K, S, B
S07		+200° C	F, K, S, B	-

4. Contact arrangement

Please refer to Page 8 & 9

Please note that VG inserts have a Comparative Tracking Index (CTI) between 175 & 400V (Material Group IIIa) and can withstand a temperature up to 150°C.

2. Crimp contacts

R	For Class W, F, K and B platings
Blank	For Class ZN and TZ plating

5. Contact gender

P	Pin (500 cycles)
S	Socket (500 cycles)

3. Class: Material & Finish

	Shell material	Shell finish
W	Aluminum	Olive drab cadmium
F		Nickel ✓
ZN		Black zinc nickel ✓
ZR		Black zinc nickel without Chromium 6+ ✓
TZ		Tin Zinc ✓
B	Marine bronze ✓	-
K	Stainless steel	Passivated ✓
S		Nickel ✓

6. Keying

(Blank) (for normal)	A	B	C	D
-------------------------	---	---	---	---

7. Deviation

Deviation	Description	Shell type compatibility
F312	Reduced flange receptacle with a standard nut	07/S07

For other deviations availability, please consult us

POWERSAFE / VG96944 - HOW TO ORDER - VG96944 DESIGNATIONS

	1.	2.	3.	4.	5.
Series	Shell type	Contact arrangement	Contact gender	Keying	Material and platings
VG96944-04	A	13-V4	P	N	A

1. Shell type

A	Receptacle	Square flange receptacle
B		Jam nut receptacle
C	Straight plug	

2. Contact arrangement

13-V4	Size 13 – 4 contacts / N, L, Pr Size 16
17-V6	Size 17 – 6 contacts / N, L, Pr Size 12
25-V6	Size 25 – 6 contacts / N, L, Pr Size 6

Please note that VG inserts have a Comparative Tracking Index (CTI) between 175 & 400V (Material Group IIIa) and can withstand a temperature up to 150°C.

3. Contact gender

P	Pin (500 cycles)
S	Socket (500 cycles)

4. Keying

N (for normal)	A	B	C	D
-------------------	---	---	---	---

5. Material and platings

	Shell material	Shell finish
A	Aluminum	Olive drab cadmium
J		Tin Zinc ✓
B	Marine bronze ✓	-

✓ : RoHS compliant

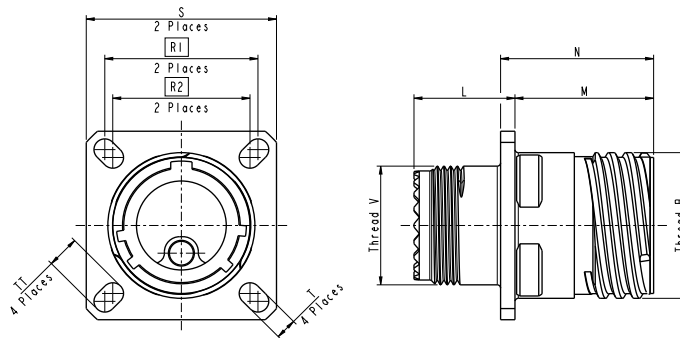
POWERSAFE / VG96944 - OVERALL DIMENSIONS - RECEPTACLES

Square flange receptacle



See part how to order page 22

AMPHENOL	VG
TVP00RW***	VG96944-04A**A
TVP00ZN***	
TVP00TZ***	VG96944-04A**J
TVPS00RF***	
TVPS00RB***	VG96944-04A**B
TVPS00RK***	



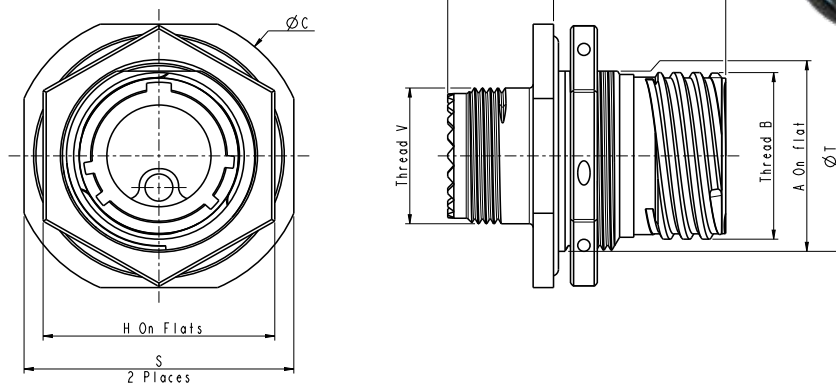
Shell size	B thread Class 2A (inches)	L Max (mm)	M Max (mm)	N +0.13 0 (mm)	R1 (mm)	R2 (mm)	S ±0.3 (mm)	T ±0.2 (mm)	TT ±0.2 (mm)	V thread (metric)
13	.875	15.5	20.9	22.99	23.01	20.62	28.6	3.25	4.93	M18x1-6g
15	1.0000	15.5	23.3	25.49	24.61	23.01	31.0	3.25	4.39	M22x1-6g
17	1.1875	15.6	23.4	25.49	26.97	24.61	33.3	3.25	4.93	M25x1-6g
21	1.3750	17.5	24.6	27.49	31.75	29.36	39.7	3.25	4.93	M31x1-6g
23	1.5000	20.7	24.6	27.49	34.93	31.75	42.9	3.91	4.93	M34x1-6g
25	1.625	20.7	24.6	27.49	38.10	34.93	46.0	3.91	6.15	M37x1-6g

Jam nut receptacle



See part how to order page 22

AMPHENOL	VG
TV07RW**	VG96944-04B**A
TV07ZN**	
TV07TZ**	VG96944-04B**J
TVS07RF**	
TVS07RB**	VG96944-04B**B
TVS07RK**	



Shell size	B thread Class 2A (inches)	A +0.1 -0.15 (mm)	C Max (mm)	K Max (mm)	P Max (mm)	H Hex 0 -0.1 (mm)	S +/-0.4 (mm)	T (mm)	V thread (metric)	Hex nut max torque (N.m)
13	.875	23.82	38.4	22.5	13.7	30	34.9	25.20 - 25.50	M18x1-6g	20
15	1.0000	26.97	41.6	25.0	14.1	34	38.1	28.30 - 28.60	M22x1-6g	
17	1.1875	30.15	44.8	25.0	14.1	36	41.3	31.80 - 31.95	M25x1-6g	30
21	1.3750	36.50	25.7	27.0	18.5	46	49.2	37.97 - 37.80	M31x1-6g	
23	1.5000	39.67	55.9	27.0	18.5	46	52.4	41.00 - 41.30	M34x1-6g	40
25	1.625	42.85	59.0	27.0	18.5	50	55.6	44.20 - 44.5	M37x1-6g	

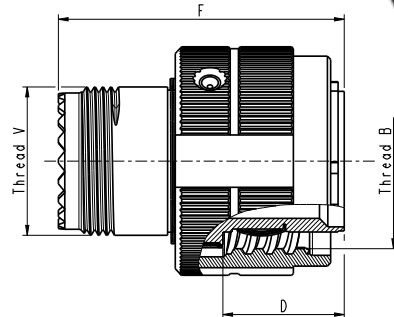
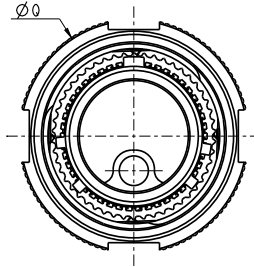
All dimensions are given for information only and are in mm, except as otherwise specified | *in mm: 1mm=0.03937 inch

POWERSAFE / VG96944 - OVERALL DIMENSIONS - PLUG

Straight plug

See part how to order page 22

AMPHENOL	MILITARY
TV06RW**	VG96944-04C**A
TV06ZN**	
TV06TZ**	VG96944-04C**J
TVS06RF**	
TVS06RB**	VG96944-04C**B
TVS06RK**	



Conforms to CECC 75.201.002 (coupling nut for arctic gloves)

Shell size	B thread Class 2B (inches)	Q Max (mm)	F Max (mm)	D (mm)	V thread (metric)
13	.875	29.4	35.5	15.01	M18x1-6g
15	1.0000	32.5	38.0	17.51	M22x1-6g
17	1.1875	35.7	38.0	17.51	M25x1-6g
21	1.3750	38.5	44.4	19.51	M31x1-6g
23	1.5000	44.9	46.0	19.51	M34x1-6g
25	1.625	48.0	46.0	19.51	M37x1-6g

All dimensions are given for information only and are in mm, except as otherwise specified | *in mm: 1mm=0.03937 inch

POWERSAFE / VG96944 - JAM NUT REDUCED FLANGE RECEPTACLE

Reduced flange receptacle are derived from 38999 series III Jam nut receptacles and dedicated for applications where size & weight are criticals, offering un smaller footprint and higher contact density

Main features

- For Jam nut receptacle (TV07/TVS07).
- Higher density on panel: **41% average footprint surface reduction.**
- Lighter: **20% average lighter than standard 38999**
- Mates with standard **PowerSafe** plug and caps.
- Matches the **PowerSafe** performances.
- Improved design of the o'ring groove allowing the o'ring to stay in place.



With Castle nut



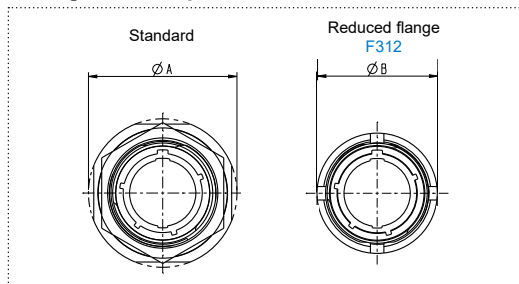
MATED PAIR

RECEPTACLE FRONT FACE

Standard
TV*07***Jam nut
Reduced flange
TV*07***F312

Footprint savings

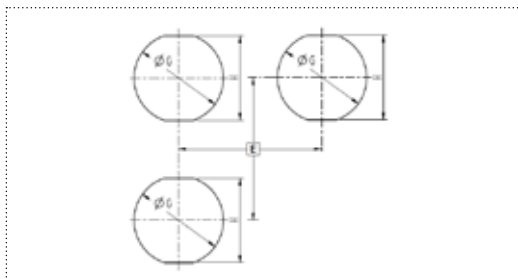
Average 41% footprint reduction:



Size	Standard PowerSafe ØA _{MAX} (mm)	PowerSafe Reduced flange (F312) ØB _{MAX} (mm)	Ø Reduction
13	38.4	28.1	46%
15	41.6	32.1	40%
17	44.8	36.1	35%
21	52.7	41.1	39%
23	55.9	44.1	38%
25	59	48.1	34%

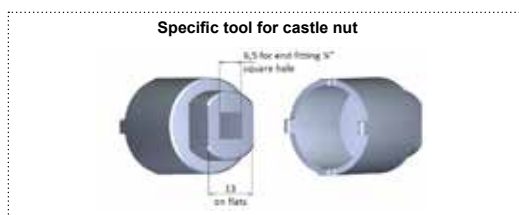
All others dimensions remains the same in standard or reduced flange (lengths, threads, etc.).
See page 10 for all other Jam nut receptacle dimensions

Panel hole dimensions



Size	E recommended	ØG +0.1 0	H +0.1 0
13	31.4	23	22.3
15	34.5	27	25.5
17	37.7	31	30.3
21	43.7	36	35.1
23	46.9	39	38.3
25	51.0	43	41.5

Tooling



Size	Tool reference
13	809683
15	809684
17	809685
21	809687
23	809688
25	809689

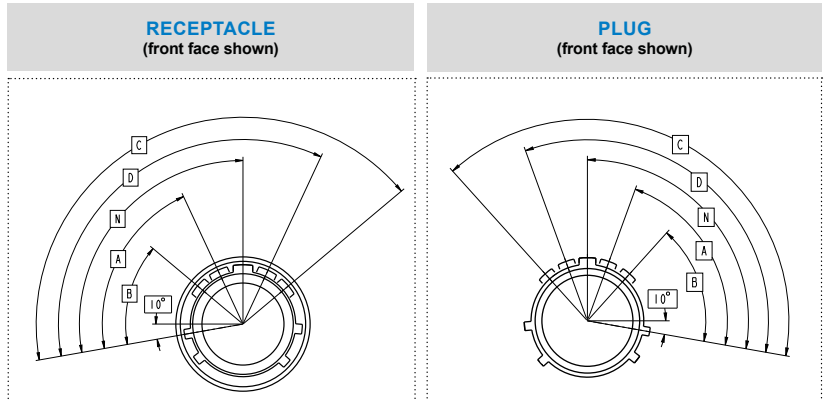
All dimensions are given for information only and are in mm, except as otherwise specified | *in mm: 1mm=0.03937 inch

POWERSAFE / VG96944 - KEYWAY & PANEL HOLE DIMENSIONS

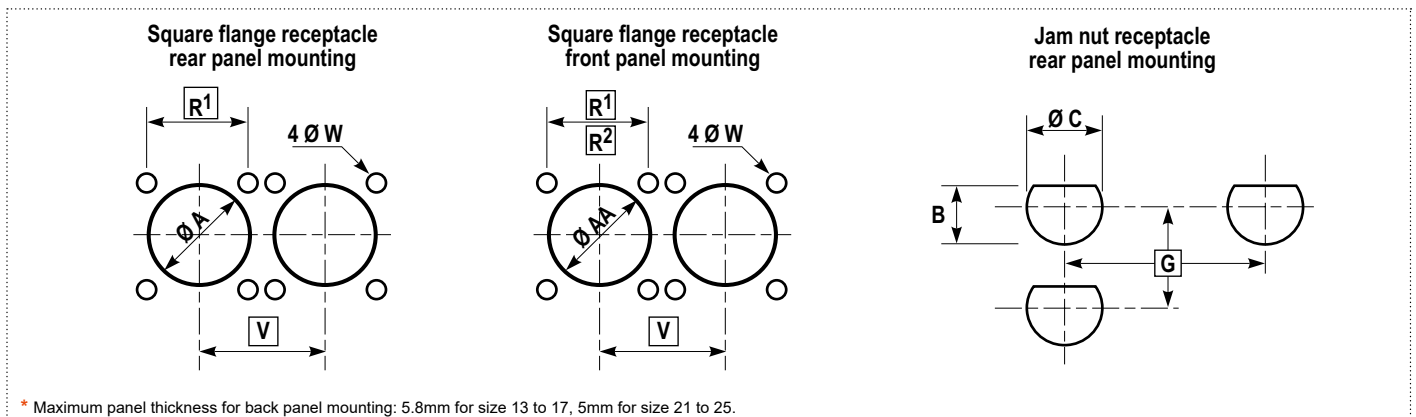
Keyway polarization

A plug with a given rotation letter will mate with a receptacle with the same rotation letter. The angles for a given connector are the same whether it contains pins or sockets. Minor keys stay fixed, master key rotates. Keyway identification letter is (Blank) for Normal, A, B, C or D.

Size	Position of the major key				
	NORMAL BLANK	A	B	C	D
13	100	80	68	132	120
15	100	79	66	134	121
17	100	82	70	130	118
21	100	82	70	130	118
23	100	85	74	126	115
25	100	85	74	126	115



Panel hole dimensions



Shell size	R ¹ (mm)	R ² (mm)	V Mini (mm)	ØA Min (mm)	ØAA Min (mm)	ØW ±0.13 (mm)	G Mini (mm)	ØC +0.25 0 (mm)	B 0 -0.25 (mm)
13	23.01	20.62	30.20	23.42	19.05	3.25	36.00	25.65	24.26
15	24.61	23.01	33.30	26.59	23.01	3.25	39.60	28.83	27.56
17	26.97	24.61	36.50	30.96	25.81	3.25	43.30	32.01	30.73
21	31.75	29.36	42.50	36.12	32.16	3.25	50.60	38.35	37.08
23	34.93	31.75	45.70	39.29	34.93	3.81	54.20	41.53	40.26
25	38.10	34.93	48.80	42.47	37.69	3.81	59.70	44.70	43.43

All dimensions are given for information only and are in mm, except as otherwise specified | *in mm: 1mm=0.03937 inch

Due to technical modifications, all information provided is subject to change without prior notice
Designed by Amphenol Socapex

Amphenol SOCAPEX

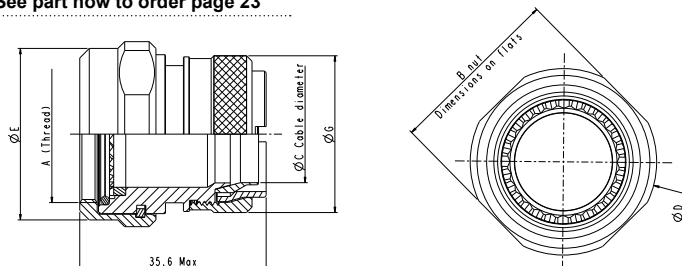
POWERSAFE / VG96944 - BACKSHELLS

TV NSA Backshells

These backshells ensure the shielding by clamping the braid with a screwing system. The free inner ring avoids twisting of the braid during screwing (double conus style).



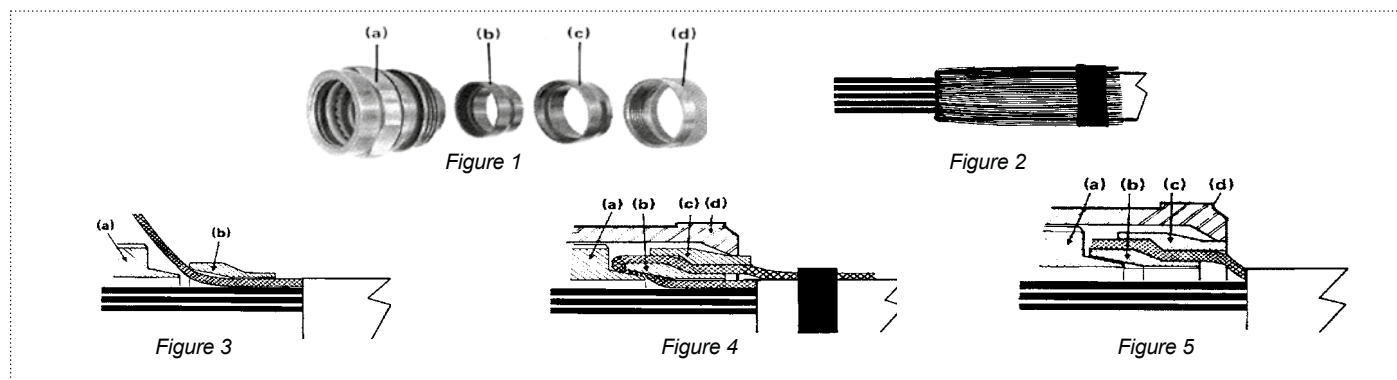
See part how to order page 23



Shell size	A Thread Metric	B max	Ø C max	Ø D max	Ø E max	Ø G max
13	M18 x 1.0-6H	26	12.7	28.1	21.2	22.6
15	M22 x 1.0-6H	29	14.8	31.1	25.1	25.8
17	M25 x 1.0-6H	32	17.9	34.1	28.1	29.0
21	M31 x 1.0-6H	39	23.1	41.1	34.1	35.2
23	M34 x 1.0-6H	42	26.2	44.1	36.9	38.4
25	M37 x 1.0-6H	45	28.8	49.1	39.9	41.5

Use Straight Shrink Boots 202K121-12 (size 13), 202K132-12 (size 15 and 17), 202K153-12 (size 21, 23 and 25) and S1255 Adhesive

TV NSA Installation instructions



1. Prepare the cable for termination process and slide the items onto the cable in the order shown on figure 1.

2. Screw the backshell at the rear of the connector. The best performance in time of the system « connector + rear accessory » consists in applying the torque value to screw then unscrew, to apply the torque value & screw a second time, then to unscrew and finally screw the torque value a third time.

3. Fold back the braid on the outer jacket and fix it (figure 2)

4. Install the braid as shown on figures 3 and 4: Release the braid and cover the backshell (a) and the connector's shell. Slide the first ring (b) over the braid. Fold back the braid on the ring (b) and slide the second ring (c) over the braid and the first ring (b). Screw the last ring (d) at the rear of the backshell. If necessary, fix the extra braid on the outer jacket of the cable. If this installation (double folding of the braid) is not possible, refer to figure 5: Slide the first ring (b). Release the braid and cover the backshell (a) and the connector's shell. Cut the braid as shown. Slide the second ring (c) over the braid and the first ring (b). Screw the last ring at the rear of the backshell.

5. Then, Install the heat-shrink moulded piece.



VG95319 Backshells

These backshells are suitable for **PowerSafe** connectors and ensure the shielding by clamping the braid with a screwing system (single conus style).

Shell size	Backshell VG Standard	Shrink boot	Adhesive	Micro Clamping Band	or	Standard Clamping Band	Tool for Micro Band	Tool for Standard Band
13	VG95319-1011G012A	VG95343T06B001A	VG95343T15A001	895693	072952	809985	809952	
15	VG95319-1011G004A	VG95343T06B003A						
17	VG95319-1011G005A	VG95343T06B004A		895700				
21	VG95319-1011G008A	VG95343T06B005A						
23	VG95319-1011G009A	VG95343T06C010A						
25	VG95319-1011G010A	VG95343T06C010A						

Use Straight Shrink Boots 202K121-12 (size 13), 202K132-12 (size 15 and 17), 202K153-12 (size 21, 23 and 25) and S1255 Adhesive

All dimensions are given for information only and are in mm, except as otherwise specified | *in mm: 1mm=0.03937 inch

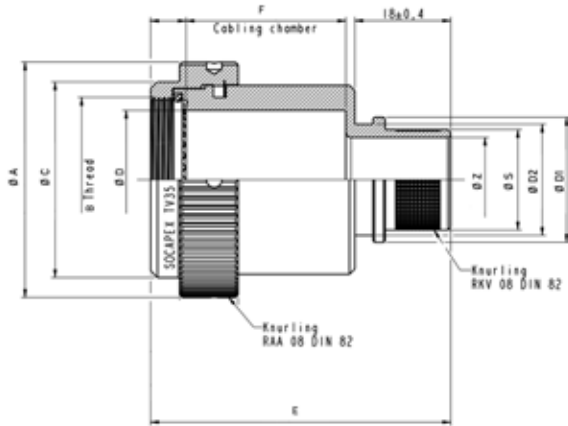
POWERSAFE / VG96944 - BACKSHELLS



TV35 Backshells

TV35 and TVB35 band backshells provide a full 360° shield termination with a quick, easy and cost effective cabling process. They are available with different cabling chamber lengths and exit diameters. The use of replaceable bands facilitates future maintenance or reparability. Sealing is ensured by straight or right angled heat shrink moulded piece at the rear of backshell.

See part how to order page 23



Shell size	B Thread Metric	Ø A max	Ø C	Ø D
13	M18 x 1.0-6H	31.80	25.00	13.80
15	M22 x 1.0-6H	35.00	28.00	16.30
17	M25 x 1.0-6H	38.10	30.80	20.10
21	M31 x 1.0-6H	44.30	36.90	26.00
23	M34 x 1.0-6H	47.20	39.80	29.28
25	M37 x 1.0-6H	50.00	43.00	32.45

Shell size	E max mm	Cabling chamber length F ^{+/-0.1} mm	Z rear side diameter coding									
			08	10	12	14	16	20	24	28	32	36
13	36	10	■	■	■	■	■	■	■			
	46	20			■							
	56	30			■		■					
15	36	10		■	■	■	■	■	■			
	46	20				■						
	56	30				■		■				
17	36	10			■	■	■	■	■			
	46	20			■	■	■					
	51	25			■							
	56	30							■			
21	36	10					■	■	■	■		
	46	20				■		■				
	56	30						■		■		
23	36	10							■		■	
	46	20							■			
	56	30							■		■	
25	36	10								■		■
	46	20								■		
	56	30								■		■
Z Coding			08	10	12	14	16	20	24	28	32	36
ØZ			6.30	7.90	9.40	11	12.60	15.80	19	22.10	25.30	28.80
ØS MIN			9.40	11.10	14.10	14.10	15.70	18.90	22	25.20	28.40	31.50
MAX			9.50	11.2	14.30 0	14.30	15.90	19.10	22.20	25.40	28.60	31.80
ØD1 ±0,1			14.00	17.10	17.10	18.70	20.30	23.50	26.70	29.80	33	36.20
ØD2 ±0,1			11.40	14.50	14.50	16.10	17.70	20.90	23.10	26.20	29.40	32.60

Use Straight Shrink Boots 202K121-12 (size 13), 202K132-12 (size 15 and 17), 202K153-12 (size 21, 23 and 25) and S1255 Adhesive.

All dimensions are given for information only and are in mm, except as otherwise specified | *in mm: 1mm=0.03937 inch

Due to technical modifications, all information provided is subject to change without prior notice
Designed by Amphenol Socapex

Amphenol SOCAPEX

POWERSAFE / VG96944 - HOW TO ORDER - TV35 BACKSHELLS



	1.	2.	3.	4.	5.
Series	Backshell style	Backshell size	Cabling chamber length	Rear side diameter	Material and platings
TV	35	11	10	11	014

1. Backshell style

35	Aluminum straight band backshell accepting heatshrink moulded piece
B35	Marine bronze straight band backshell accepting heatshrink moulded piece

2. Backshell size (same as connector size)

13	15	17	21	23	25
----	----	----	----	----	----

3. Cabling chamber length

Please refer to Page 15

10

4. Rear side diameter

Please refer to Page 15

06	08	10	12	14	16	20	24	28	32	36
----	----	----	----	----	----	----	----	----	----	----

5. Material and platings

	Shell material	Shell finish
014	Aluminum	Olive drab cadmium
023		Nickel ✓
033K		Black zinc nickel ✓
Blank	Marine Bronze ✓	-

POWERSAFE / VG96944 - HOW TO ORDER - TV NSA DESIGNATIONS



	1.	2.	3.
Series	Backshell style	Backshell size	Material and platings
TV	NSA	13	014

1. Backshell style

NSA	Screened clamping braid backshell accepting heatshrink moulded piece
-----	--

2. Backshell size (same as connector size)

13	15	17	21	23	25
----	----	----	----	----	----

3. Material and platings

	Shell material	Shell finish
014	Aluminum	Olive drab cadmium
023		Nickel ✓
033K		Black zinc nickel ✓

POWERSAFE / VG96944 - PROTECTIVE CAPS

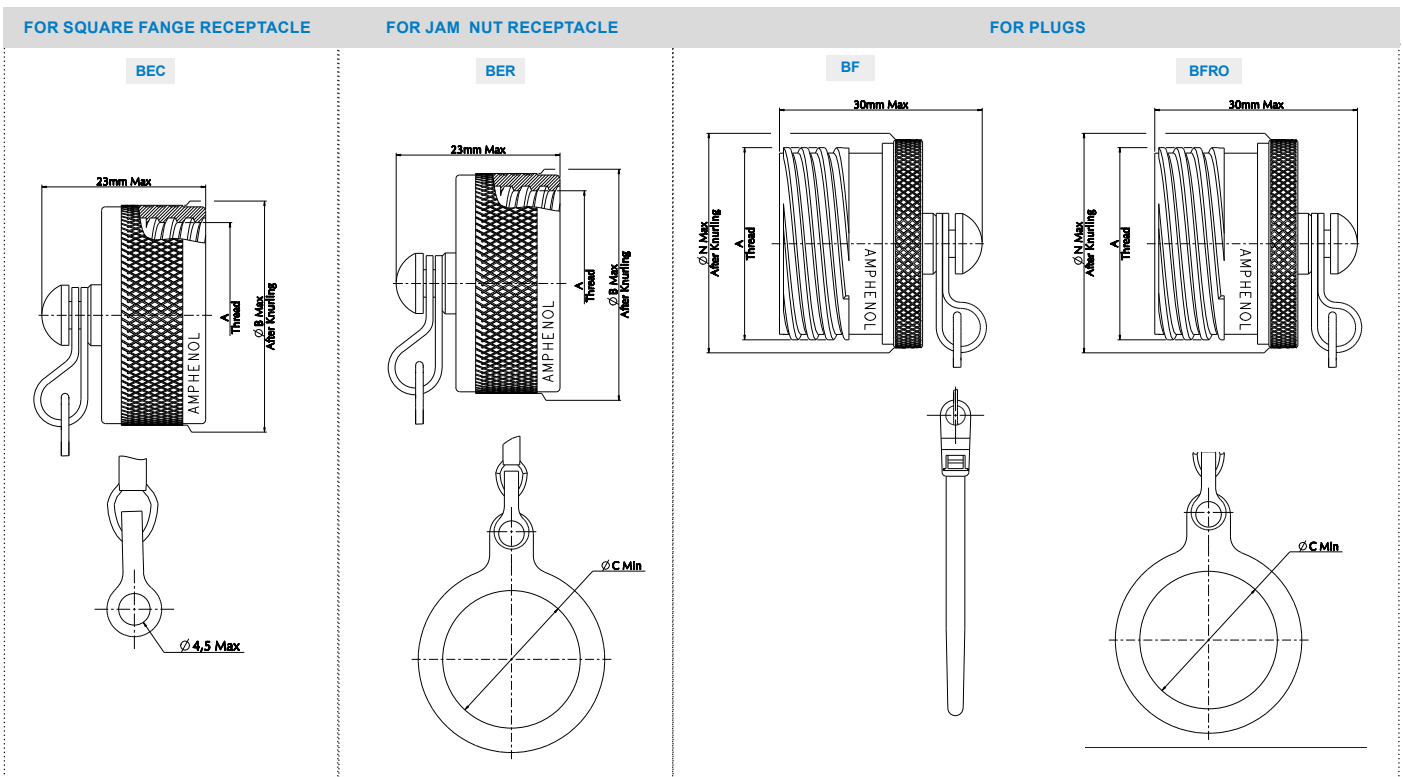
Main features

- Available for Plugs, Jam nut and Square receptacles
- IP 68 (permanent sealing)
- Protection against dust, water and moisture
- EMI function
- Nylon cord, stainless steel rope or metallic chain



Overall dimensions

See part how to order page 24



Shell size	A thread .1P-.3L-TS Class 2A (External) Class 2B (Internal) (inches)	ØB Max (After Knurling)	ØC Min	ØN Max
13	.875	25.75	25.15	24.30
15	1.0000	28.90	29.92	27.40
17	1.1875	33.80	32.00	30.60
21	1.3750	38.60	38.25	36.40
23	1.5000	41.70	42.62	39.70
25	1.625	44.90	44.45	42.80

Nylon cord, Chain and Stainless Steel Rope length

Cap type	Attachement length
BEC/BER for receptacle	127 (+13 / -7)
BF/BFRO for plug	160±5

All dimensions are given for information only and are in mm, except as otherwise specified | *in mm: 1mm=0.03937 inch

Due to technical modifications, all information provided is subject to change without prior notice
Designed by Amphenol Socapex

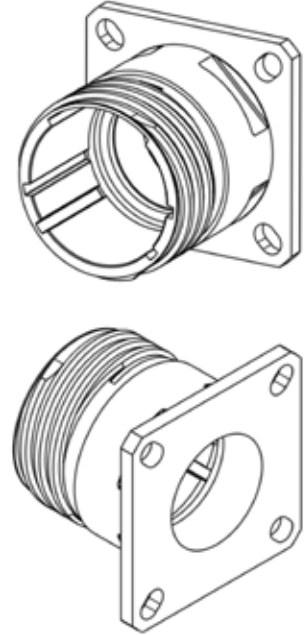
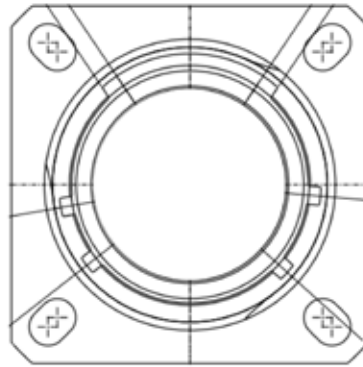
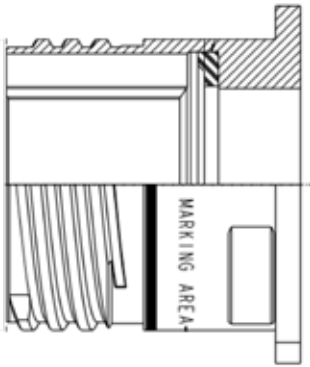
Amphenol SOCAPEX

POWERSAFE / VG96944 - DUMMY RECEPTACLES

- Dedicated to **PowerSafe**
- Universal coding : Compatible with all Keyway polarizations
- Can be used as a backshell tightening tool
- Same dimensions and Panel holes than a standard Square Flange Receptacle (see page 10).



See part how to order page 24



CRIMPING TOOLS

MANUAL CRIMPING PLIERS
M22520/1-01



HYDRAULIC PLIERS
809947



PNEUMATIC PLIERS
M22520/23-01



All dimensions are given for information only and are in mm, except as otherwise specified | *in mm: 1mm=0.03937 inch

POWERSAFE / VG96944 - HOW TO ORDER - PROTECTIVE CAPS



1.	2.	3.	4.	5.	6.
Cap type	Cap style	Wire type	Series	Material and platings	Cap size
B	EC	N	TV	W	15

1. Cap style

EC	For Square flange receptacle
ER	For Jam nut receptacle
F	For Plug

2. Wire type

-	Metal chain
N	Nylon cord
R	Jacketed stainless steel rope
RO	Jacketed stainless steel rope with washer end (for plugs)

3. Series

TV	For PowerSafe
----	---------------

4. Material and platings

	Shell material	Shell finish
W		Olive drab cadmium
F	Aluminum	Nickel ✓
ZN		Black zinc nickel ✓
B	Marine Bronze ✓	-

5. Cap size (same as connector size)

13	15	17	21	23	25
----	----	----	----	----	----

6. Deviation

F579	For Reduced flange Jam nut receptacle
------	---------------------------------------

POWERSAFE / VG96944 - HOW TO ORDER - DUMMY RECEPTACLES



1.	2.	3.	4.
Dummy receptacle	Style	Series	Material and platings
SE	00	TVE	W

1. Style

00	Square flange
----	---------------

2. Series

TVE	For PowerSafe
-----	---------------

3. Material and platings

	Shell material	Shell finish
W		Olive drab cadmium
F	Aluminum	Nickel ✓
ZN		Black zinc nickel ✓
TZ		Tin Zinc ✓
B	Marine bronze ✓	-

4. Shell size

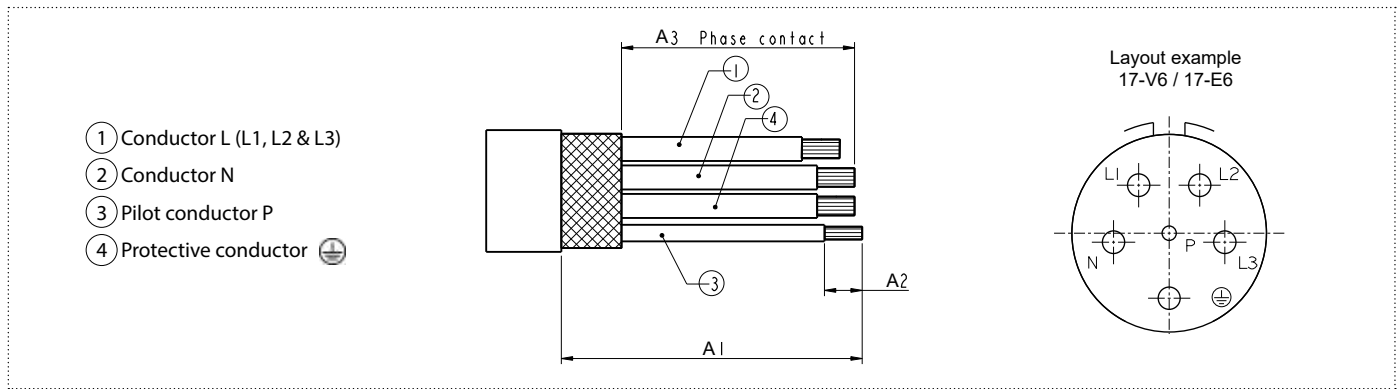
13	15	17	21	23	25
----	----	----	----	----	----

POWERSAFE / VG96944 - CONTACTS & TOOLING

	Contact type	Size	Contacts		AWG	Section mm²	dia over insulator		Crimping tools			Insertion tools			Removal tools		
			Proprietary Part Number				Tools	Positioner	Selector position	Plastic (Color)	Metallic		Plastic (Color)	Metallic			
			Pin	Socket							Straight type	Angle type		Straight type	Angle type		
13-V4 13-E4	Pilot	20	600665	600892	20 22 24	0,61 0,38 0,24	1,02	2,11	M22520/1-01	M22520/1-04	3 2 1	M81969/14-10 (red / orange)	809817	M81969/8-05	M81969/14-10 (red / orange)	809847	M81969/8-05
	Phase Neutral	16	600666	600676	14 16 18	1,94 1,23 0,96	1,65	2,77			6 6 5	M81969/14-03 (blue / white)	809816	M81969/8-07	M81969/14-03 (blue / white)	809846	M81969/8-07
	Protective		600667	600677	20	0,61					/	/					
15-V4 15-E4	Pilot	16	600660	600894	16 18 20	1,23 0,96 0,61	1,65	2,77	M22520/1-01	M22520/1-04	6 5 4	M81969/14-03 (blue / white)	809816	M81969/8-07	M81969/14-03 (blue / white)	809846	M81969/8-07
	Phase Neutral	12	600661	600671	12 14	2,98 1,94	2,46	3,61			8 7	M81969/14-04 (yellow / white)	/	M81969/8-09	M81969/14-04 (yellow / white)	/	M81969/8-09
	Protective		600662	600672	/	/											
17-V6 17-E6	Pilot	16	600660	600894	16 18 20	1,23 0,96 0,61	1,65	2,77	M22520/1-01	M22520/1-04	6 5 4	M81969/14-03 (blue / white)	809816	M81969/8-07	M81969/14-03 (blue / white)	809846	M81969/8-07
	Phase Neutral	12	600661	600671	12 14	2,98 1,94	2,46	3,61			8 7	M81969/14-04 (yellow / white)	/	M81969/8-09	M81969/14-04 (yellow / white)	/	M81969/8-09
	Protective		600662	600672	/	/											
21-V4 21-E4	Pilot	16	600660	600894	16 18 20	1,23 0,96 0,61	1,65	2,77	M22520/1-01	M22520/1-04	6 5 4	M81969/14-03 (blue / white)	/	/	M81969/14-03 (blue / white)	/	/
	Phase Neutral	6	600663	600673	6	13,61	7,3	8,1	809947 + 809908 (hex crimp) or		/	/	/	/	/	809696	
	Protective		600664	600674					M22520/23-01 + M22520/23-03	809697 (pin) 809690 (socket)							
23-V4 23-E4	Pilot	16	600660	600894	16 18 20	1,23 0,96 0,61	1,65	2,77	M22520/1-01	M22520/1-04	6 5 4	M81969/14-03 (blue / white)	/	/	M81969/14-03 (blue / white)	/	/
	Phase Neutral	4	612514	612516	4	21.2			M22520/23-01	M22520/23-04	/	/	/	/	/	809943	/
	Protective		612513	612515													
23-V6 23-E6	Pilot	16	600660	600894	16 18 20	1,23 0,96 0,61	1,65	2,77	M22520/1-01	M22520/1-04	6 5 4	M81969/14-03 (blue / white)	/	/	M81969/14-03 (blue / white)	/	/
	Phase Neutral	8	612764	612765	8	8.98 10	4,50	5,20	M22520/23-01 + M22520/23-02	WA23-447L	/	/	/	/	809961		809845
	Protective		612762	612763													
23-V6T 23-E6T	Pilot	16	600660	600894	16 18 20	1,23 0,96 0,61	1,65	2,77	M22520/1-01	M22520/1-04	6 5 4	M81969/14-03 (blue / white)	/	/	M81969/14-03 (blue / white)	/	/
	Phase Neutral	8	612644	612642	8	8.98 10	4,50	5,20	809872 (M300BT)	809873 (SP593)	/	/	/	/	809961		809845
	Protective		612643	612641													
25-V6 25-E6	Pilot	16	600660	600894	16 18 20	1,23 0,96 0,61	1,65	2,77	M22520/1-01	M22520/1-04	6 5 4	M81969/14-03 (blue / white)	/	/	M81969/14-03 (blue / white)	/	/
	Phase Neutral	6	600663	600673	6	13,61	7,3	8,1	809947 + 809908 (hex crimp) or		/	/	/	/	/	809696	
	Protective		600664	600674					M22520/23-01 + M22520/23-03	809697 (pin) 809690 (socket)							

All dimensions are given for information only and are in mm, except as otherwise specified | *in mm: 1mm=0.03937 inch

POWERSAFE / VG96944 - WIRE STRIP LENGTH



Size	Contact type	A1	A2	A3 (for shielding braid)
13	Protective contact			
	Phase contacts (N, L1, L2 & L3)	53 - 63	6 - 6.5	
	Pilot contact (P)			
15	Protective contact			
	Phase contacts (N, L1, L2 & L3)	53 - 63	6 - 6.5	
	Pilot contact (P)			
17	Protective contact			
	Phase contacts (N, L1, L2 & L3)	53 - 63	6 - 6.5	
	Pilot contact (P)			
21	Protective contact			
	Phase contacts (N, L1, L2 & L3)	55 - 65	14 - 15.5	
	Pilot contact (P)	60 - 70	6 - 6.5	
23	Protective contact			
	Phase contacts (N, L1, L2 & L3)	55 - 65	14 - 15.5	
	Pilot contact (P)	60 - 70	6 - 6.5	
25	Protective contact			
	Phase contacts (N, L1, L2 & L3)	55 - 65	14 - 15.5	
	Pilot contact (P)	60 - 70	6 - 6.5	

42 MAX

All dimensions are given for information only and are in mm, except as otherwise specified | *in mm: 1mm=0.03937 inch

POWERSAFE VG96944 - QUALIFIED AND/OR SUGGESTED CABLES

Size 13 - Insert 13-V4	PN	Raw material
WIRE AWG16 white	VG95218T020A003	Tinned copper, jacket PVF modified
WIRE AWG14 white	M81044/12-14-9	Tinned copper, jacket PVDF
WIRE AWG14 blue	M81044/12-14-6	Tinned copper, jacket PVDF
WIRE AWG14 green yellow	M81044/12-14-45	Tinned copper, jacket PVDF
Fillers	-	PTFE
Braid	TB13-T-63	Tinned copper
Heatshrink	DR25 3/8-0M (VG95343 Part 5 Type D)	Elastomer

POWERSAFE VG96944 - QUALIFIED AND/OR SUGGESTED CABLES

Size 15 - Insert 15-V4	PN	Raw material
WIRE AWG16 white	VG95218T020A003	Tinned copper, jacket PVF modified
WIRE AWG12 white	VG95218T020A017	Tinned copper, jacket PVF modified
WIRE AWG12 blue	M81044/12-12-6	M81044/12-12-6
WIRE AWG12 green yellow	M81044/12-12-45	M81044/12-12-45
Fillers	-	PTFE
Braid	TB13-T-695	Tinned copper
Heatshrink	DR25 1/2-0M (VG95343 Part 5 Type D)	Elastomer
Size 17 - Insert 17-V6	PN	Raw material
WIRE AWG16 white	VG95218T020A003	Tinned copper, jacket PVF modified
WIRE AWG12 white	VG95218T020A017	Tinned copper, jacket PVF modified
WIRE AWG12 blue	M81044/12-12-6	M81044/12-12-6
WIRE AWG12 green yellow	M81044/12-12-45	M81044/12-12-45
Fillers	-	PTFE
Braid	TB13-T-695	Tinned copper
Heatshrink	DR25 1/2-0M (VG95343 Part 5 Type D)	Elastomer
Size 21 - Insert 21-V4	PN	Raw material
WIRE AWG16 white	VG95218T020A003	Tinned copper, jacket PVF modified
WIRE AWG6 white	M22759/16 6-9	Tinned copper, jacket PVDF
WIRE AWG6 blue	M22759/16 6-6	Tinned copper, jacket PVDF
WIRE AWG6 green yellow	M22759/16 6-4/5	Tinned copper, jacket PVDF
Fillers	-	PTFE
Braid	TB13-T-200	TINNED copper
Heatshrink	DR25 1-0M (VG95343 Part 5 Type D)	Elastomer
Size 23 - Insert 23-V4	PN	Raw material
WIRE AWG16 white	VG95218T020A003	Tinned copper, jacket PVF modified
WIRE AWG4 white	M22759/16 4-9	Tinned copper, jacket ETFE
WIRE AWG4 blue	M22759/16 4-6	Tinned copper, jacket ETFE
WIRE AWG4 green yellow	M22759/16 4-4/5	Tinned copper, jacket PVDF
Fillers	-	PTFE
Braid	TB13-T-200	Tinned copper
Heatshrink	DR25 1-0M (VG95343 Part 5 Type D)	Elastomer
Size 23 - Insert 23-V6	PN	Raw material
WIRE AWG16 white	VG95218T020A003	Tinned copper, jacket PVF modified
WIRE AWG8 white	VG95218T020A011	Tinned copper, jacket PVF modified
WIRE AWG8 blue	M22759/16 8-6	Tinned copper, jacket PVDF
WIRE AWG8 green yellow	M22759/16 8-4/5	Tinned copper, jacket PVDF
Fillers	-	PTFE
Braid	TB13-T-200	Tinned copper
Heatshrink	DR25 1-0M (VG95343 Part 5 Type D)	Elastomer
Size 25 - Insert 25-V6	PN	Raw material
WIRE AWG16 white	VG95218T020A003	Tinned copper, jacket PVF modified
WIRE AWG6 white	M22759/16 6-9	Tinned copper, jacket PVDF
WIRE AWG6 blue	M22759/16 6-6	Tinned copper, jacket PVDF
WIRE AWG6 green yellow	M22759/16 6-4/5	Tinned copper, jacket PVDF
Fillers	-	PTFE
Braid	TB13-T-200	Tinned copper
Heatshrink	DR25 1-0M (VG95343 Part 5 Type D)	Elastomer

POWERSAFE - SUGGESTED MIL QUALIFIED CABLES

Size 13 - Insert 13-E4	PN	Raw material
WIRE AWG20	M22759/34 20	Tinned copper, jacket ETFE
WIRE AWG14	M22759/34 14	Tinned copper, jacket ETFE
Fillers	/	PTFE
Braid	4D045558	Nickel copper
Heatshrink	RW200E-1/2-0 or HLR33001270	Fluoroelastomeric or Viton
Size 15 - Insert 15-E4	PN	Raw material
WIRE AWG16	M22759/34 16	Tinned copper, jacket ETFE
WIRE AWG12	M22759/34 12	Tinned copper, jacket ETFE
Fillers	/	PTFE
Braid	4D047547	Nickel copper
Heatshrink	RW200E-3/4-0 or HLR33001900	Fluoroelastomeric or Viton
Size 17 - Insert 17-E6	PN	Raw material
WIRE AWG16	M22759/34 16	Tinned copper, jacket ETFE
WIRE AWG12	M22759/34 12	Tinned copper, jacket ETFE
Fillers	/	PTFE
Braid	4D047547	Nickel copper
Heatshrink	RW200E-3/4-0 or HLR33001900	Fluoroelastomeric or Viton
Size 21 - Insert 21-E4	PN	Raw material
WIRE AWG16	M22759/34 16	Tinned copper, jacket ETFE
WIRE AWG6	M22759/34 6	Tinned copper, jacket ETFE
Fillers	/	PTFE
Braid	4D045591	Nickel copper
Heatshrink	RW200E-1 1/2-0 or HLR33003810	Fluoroelastomeric or Viton
Size 23 - Insert 23-E4	PN	Raw material
WIRE AWG16	M22759/34 16	Tinned copper, jacket ETFE
WIRE AWG4	M22759/34 4	Tinned copper, jacket ETFE
Fillers	/	PTFE
Braid	4D045591	Nickel copper
Heatshrink	RW200E-1 1/2-0 or HLR33003810	Fluoroelastomeric or Viton
Size 23 - Insert 23-E6	PN	Raw material
WIRE AWG16	M22759/34 16	Tinned copper, jacket ETFE
WIRE AWG4	M22759/34 8	Tinned copper, jacket ETFE
Fillers	/	PTFE
Braid	4D045591	Nickel copper
Heatshrink	RW200E-1 1/2-0 or HLR33003810	Fluoroelastomeric or Viton
Size 25 - Insert 25-E6	PN	Raw material
WIRE AWG16	M22759/34 16	Tinned copper, jacket ETFE
WIRE AWG6	M22759/34 6	Tinned copper, jacket ETFE
Fillers	/	PTFE
Braid	4D045591	Nickel copper
Heatshrink	RW200E-1 1/2-0 or HLR33003810	Fluoroelastomeric or Viton

Note that High performance Nickel plated or Silver plated wires can also be used for harsh environment applications, to withstand higher temperatures.

NOTES

Notes section with horizontal dotted lines for writing.

ABOUT AMPHENOL

Founded in 1932, **Amphenol** is one of the largest manufacturers of interconnect products in the world. The company designs, manufactures, and markets electrical, electronic, and fiber optic connectors, interconnect systems, and coaxial and specialty cables.

Amphenol has a diversified presence as a leader in high growth areas of the interconnect industry and provides solutions for customers in the automotive, broadband, industrial, information technology and data communications, military and aerospace, mobile devices, and mobile networks markets.

More info on www.amphenol.com

Amphenol
ENABLING THE ELECTRONICS REVOLUTION

Europe

FRANCE	Amphenol AIR LB	2 rue Clément Ader, ZAC de Wé - 08110 Carignan	+33 3 24 22 78 49
FRANCE	Amphenol SEFEE	Z.I. des Cazes – BP243 - 12402 Saint-Affrique Cedex	+33 5 65 98 11 00
GERMANY	Amphenol AIR LB GMBH	Am Kleinbahnhof 4 - 66740 Saarlouis	+49 6831 981 00
ITALY	Amphenol EUROPEAN SALES OPERATIONS	Via Barbaiana n.5 - 20020 Lainate - Milano	+39 293 254 214
UNITED KINGDOM	Amphenol INVOTEC	Unit 1-3, Hedging Lane Industrial Estate, Dosthill - Tamworth, B77 5HH	+44 1827 263 000
UNITED KINGDOM	Amphenol IONIX SYSTEMS	Prospect House, Taylor Business Park, Risley, Warrington, WA3 6HP	+44 1 942 685 200
UNITED KINGDOM	Amphenol LTD	Thanet Way, Whitstable - KENT, CT53JF	+44 1227 773 200
UNITED KINGDOM	Amphenol MARTEC	St Augustines Business Park, Swalecliffe Whitstable - Kent CT5 2QJ	+44 1227 793 733

North America

CANADA	Amphenol CANADA	605 Milner avenue - Toronto, Ontario	+1 416 291 0647
USA	Amphenol AEROSPACE OPERATIONS	40-60 Delaware street - Sidney, NY 13838	+1 800 678 0141
USA	Amphenol BORISH TECHNOLOGIES	4511 East Paris AVE - Grand Rapids, MI 49512	+1 616 554 9820
USA	Amphenol FSI	1300 Central Expwy N, Suite 100 - Allen, TX 75013	+1 214 547 2400
USA	Amphenol GRIFFITH ENTERPRISES	6000 East Coury Drive - Cottonwood, AZ 86326	+1 928 634 3685
USA	Amphenol NEXUS TECHNOLOGIES	50 Sunnyside Avenue - Stamford, CT 06902	+1 203 327 7300
USA	Amphenol PCD	72 Cherry Hill Drive - Beverly, MA. 01915	+1 978 624 3400
USA	Amphenol PRINTED CIRCUIT	Board Technology, 91 Northeastern Boulevard - Nashua, NH 03062	+1 603 324 4500
USA	Amphenol SV MICROWAVE	2400 Centrepark West Drive - West Palm Beach, FL	+1 561 840 1800
USA	Amphenol TIMES MICROWAVE	358 Hall Avenue - Wallingford, CT 06492	+1 800 867 2629

Asia

CHINA	Amphenol PCD CO.	Building 21, 1 st Liao Keng Industrial Zone, Shi Yan Street - Bao An District - Shenzhen 518108	+86 755 8173 8000/8286
INDIA	Amphenol INTERCONNECT INDIA	105 Bhosari Industrial Area - Pune 411 026	+91 20 27120363
JAPAN	Amphenol JAPAN	471-1, Deba, Ritto-City - Shiga 520 3041	+81 77 553 8501
KOREA	Amphenol DAESHIN	558 SongNae-Dong SoSa-Gu, Bucheon-city, Kyunggi-Do - 420-130	+81 32 610 3830/3845
SINGAPORE	Amphenol EAST ASIA	26/F, Railway Plaza, 39 Chatham Road South, Tsim Sha Tsui, Kowloon, Hong Kong	+65 6294 2128

Other Areas

AFRICA	Amphenol AFRICA	30 Impala Rd - Sandton 2146	+27 82 410 5179
ARGENTINA	Amphenol ARGENTINA	Av. Callao 930 2do piso Oficina B "Plaza" C1023 - AAP Buenos Aires	+54 11 4815 6886
AUSTRALIA	Amphenol AUSTRALIA PTY	2 Fiveways Blvd., Keysborough - Melbourne - Victoria 3173	+61 3 8796 8888
BRAZIL	Amphenol DO BRAZIL	Rua Diogo Moreira, 132, 20 andar, rooms 2001-2-3	+55 11 3815 1003
ISRAEL	Amphenol BAR-TEC	3 Hagavish Street, K fir-Barkan Bldg. East Industrial Zone - Kfar-Sava, 44102	+972 9 764 4100
MEXICO	Amphenol OPTIMIZE	Carretera Internacional Km 6.5, Col. Parque Industrial, Nogales, Sonora, C.P. 84094	+52 631 311 160
NEW ZEALAND	Amphenol PHITEK	Level 4, 2 Kingdon Street, Newmarket, Auckland 1023	+64 9 524 2984
RUSSIA	Amphenol RUSSIA	Yaroslavskaia Street 8 - 129164 Moscow	+7 495 937 6341
TURKEY	Amphenol TURKEY	Sun Plaza 15 Kat: 15 Maslak Hah. Bilim Sok. No.5 - Sisli/Istanbul, 34398	+90 212 367 92 19

Amphenol SOCAPEX

Amphenol Socapex

948, promenade de l'Arve BP29
74311 Thyez Cedex - France
+33 (0)4 50 89 28 00
contact@amphenol-socapex.fr
www.amphenol-socapex.com



For Technical Support

+33 (0)4 50 89 28 49
technicalsupport@amphenol-socapex.fr

To buy our products

+33 (0)4 50 90 28 00
contact@amphenol-socapex.fr
www.amphenol-socapex.com/amphenol/sales
Request a quote online at www.amphenol-socapex.com/quotation_request

Documentation

www.amphenol-socapex.com/documentation
To order a paper version of our catalogs, send an e-mail to communication@amphenol-socapex.fr

Check our product inventory



Product Selectors & 3D Files



NEW

GICAT
MEMBER



www.amphenol-socapex.com

Follow Amphenol Socapex on social media :



This catalog uses paper from managed forests, PEFC & FSC labels, and is printed by a printer certified "Imprim'Vert®"

We reserve the right to modify our products in any way we deem necessary.
Any duplication is prohibited, unless approved in writing.

DOC-000994-ANG - September 2024
Designed by Amphenol Socapex