



## LC FTV

Fiber Optic Solution - Transform your LC patchcord into an Environmental Connector



LC Field offers an easy system to upgrade from a standard to an environmental LC with no cabling operation for installation in field. Based on MIL-DTL-38999 series III type, plugs and receptacles are mated thanks to a Tri-Start thread coupling mechanism.

### Main features

#### Main characteristics:

- Thread coupling, MIL-DTL-38999 series III type
- Shell size 19
- The LC Field offers an easy system to upgrade from a standard to an environmental LC.
- Sealed against fluids and dust (IP68)
- Shock, vibration proof

With the patented RJStop® system you can use a standard LC patchcord in a metallic plug which will protect it from shocks, dust and fluids.

**No hazardous on-field cabling!**

#### Mechanical characteristics:

- Number of Channels: 2
- Typical Insertion Loss: 0,5dB in MultiMode and SingleMode
- Durability 500 mating/unmating cycles (changes for <0,2 dB)

#### Environmental protection :

- Material and platings:
  - 48h - Aluminium shell with Nickel plating ✓
  - 500h - Aluminium shell with Black zinc nickel plating ✓
  - 500h - Aluminium shell with Olive drab cadmium plating ✓
  - 500h - Marine bronze shell ✓
- Operating temperature: -40°C to +85°C (-40°F to 185°F)

✓ : RoHS compliant



### Markets & Applications



Railways



Base station



Military Communication

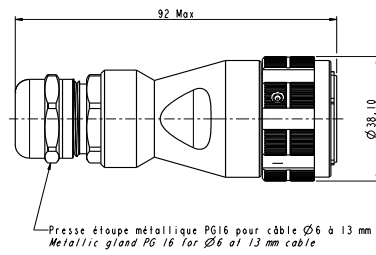


Naval

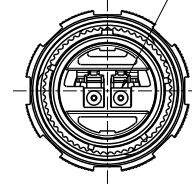
## Plug

Plug – Shell type 6M

Part number type: **LCFTV 6M X X X**



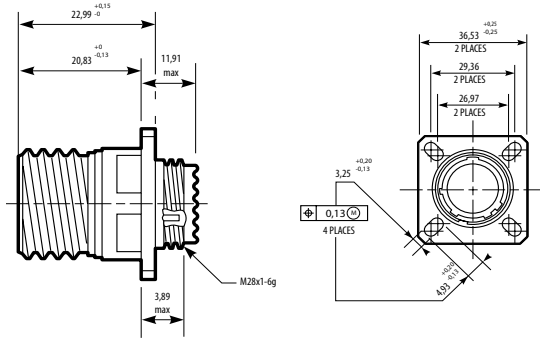
Connecteur LC Duplex (Non fourni)  
 LC Duplex connector (Not supplied)



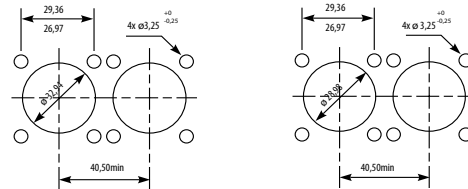
## Receptacles

Square flange receptacle – Shell type 2

Part number type: **LCFTV 2 X X X**

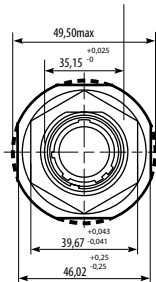
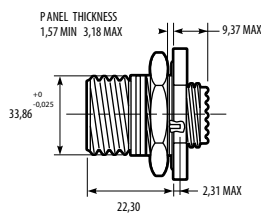


### Panel Drilling

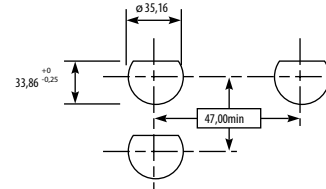


Jam nut receptacle – Shell type 7

Part number type: **LCFTV 7 X X X**

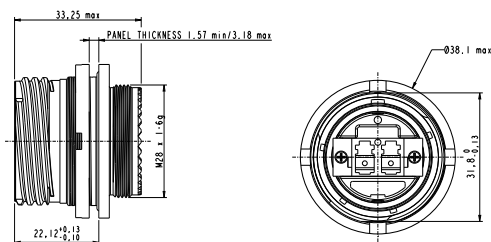


### Panel Drilling

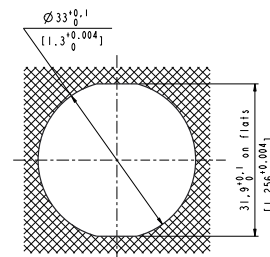


Reduced flange receptacle – Jam nut shell type 7m nut shell type 19

Part number type: **LCFTV 7 X X X F312**



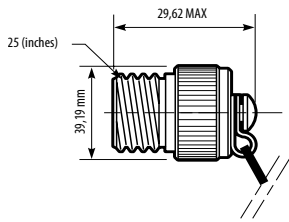
### Panel Drilling



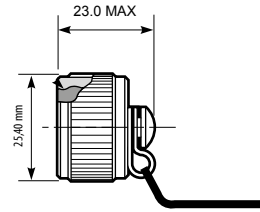
## Accessories

### Protective caps

#### Plug caps



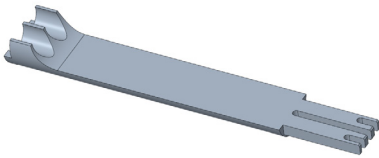
#### Receptacle caps



### LC Field Tools

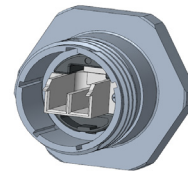
#### Mounting tools

**LCFTV MO TOOL:** LC FIELD Mounting tools

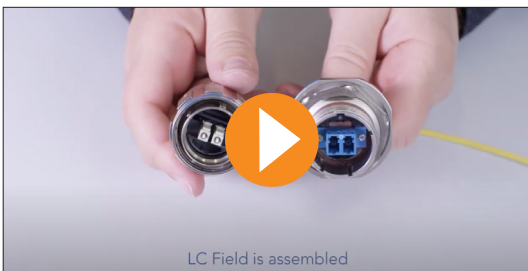


#### Dismounting tools

**LCFTV DM TOOL:** LC FIELD Dismounting tools (To dismount the LC you need to use both dismounting and mounting tools)



## Assembly video



Scan & Discover !



# LC FIELD

## How to order - Connectors

| 1.     | 2.         | 3.         | 4.           | 5.           | 6.        |
|--------|------------|------------|--------------|--------------|-----------|
| Series | Shell type | Cable type | Shell finish | Polarization | Deviation |
| LCF TV | 6M         | D          | N            | N            | F312      |

### 1. Series

|        |                        |
|--------|------------------------|
| LCF TV | Optical connector type |
|--------|------------------------|

### 2. Shell type

| Plug   | Plug - Compatible for all LC PC and APC Duplex         |  |
|--|--|--|
|  | 6M   | Plug with metal backshell and metal PG clamp |
| Compatible for all LC PC Duplex (adapter blue color) |  |  |
| Receptacle without backshell                         | 2  | Square flange receptacle                     |
|  | 7  | Jam Nut receptacle                           |
|  | Compatible for all LC APC Duplex (adapter green color) |  |
|  | 2A   | Square flange receptacle                     |
| 7A   | Jam nut receptacle                                     |  |

### 3. Cable type

| Only for plug     | Cable gland  |        |          |              |
|-------------------|--|--------|----------|--------------|
| Cable type        | ø 1,6 mm   | ø 2 mm | ø 2,8 mm | ø 6 to 13 mm |
| Flat duplex cable | D:   | F:     | H:       |              |
| Duplex zipcord    | E:   | G:     | I:       |              |
| Tactical cable    |  |        |          | J:           |
| T                 | Flat duplex cable for 1,6 mm - 2 mm - 2,8 mm + Duplex zipcord for 1,6 mm - 2 mm - 2,8 mm |        |          |              |

| Only for receptacle (no backshell available for RECEPTACLE) |                              |
|---|------------------------------|
| 0   | Receptacle without backshell |

### 4. Shell finish

|    |                     |
|----|---------------------|
| N  | Nickel plated ✓     |
| G  | Olive drab cadmium  |
| B  | Bronze ✓            |
| ZN | Black zinc nickel ✓ |
| Z  | Vert zinc cobalt ✓  |

✓ RoHS compliant

### 5. Polarization

|   |                             |
|---|-----------------------------|
| N | Normal or A / B / C / D / E |
|---|-----------------------------|

### 6. Deviation (only for receptacle)

|      |                                       |
|------|---------------------------------------|
| F312 | Reduced flange                        |
| F311 | Reduced flange with safety castle nut |

## How to order - Caps

| 1.         | 2.                  | 3.        | 4.     | 5.           | 6.         |
|------------|---------------------|-----------|--------|--------------|------------|
| Cap Series | Protective Cap type | Wire type | Series | Shell finish | Shell size |
| B          | EC                  | N         | TV     | W            | 19         |

### 1. Cap Series

|   |            |
|---|------------|
| B | Cap Series |
|---|------------|

### 2. Protective cap type

|    |                              |
|----|------------------------------|
| EC | For square flange receptacle |
| ER | For jam nut receptacle       |
| F  | For plug                     |

### 3. Wire type

|       |                |
|-------|----------------|
| N     | Nylon cord     |
| Blank | Metallic chain |

### 4. Series

|    |        |
|----|--------|
| TV | Series |
|----|--------|

### 5. Shell finish

|    |  |
|----|--|
| B  | Bronze ✓                                       |
| F  | Electroless nickel plated, aluminium version ✓ |
| W  | Olive drab cadmium plated, aluminium version   |
| ZN | Black zinc nickel ✓                            |

### 6. Shell size

|    |                                    |
|----|------------------------------------|
| 19 | Corresponding connector shell size |
|----|------------------------------------|

### Requested information to order LC Field Patchcord

Type of connector: Male /Female  
 Type of fiber: 50/125, 62,5/125, 9/125  
 Patchcord length: ex 10.5m  
 Drawing: description of the product  
 Contact us for other configuration.

### Tools informations

**Mounting Tools:**  
 LCFTV MO TOOL: LC FIELD Mounting tools  
**Dismounting Tools:**  
 LCFTV DM TOOL: LC FIELD Dismounting tools  
 (To dismount the LC you need to use both dismounting and mounting tools)