



LC FTV

Fiber Optic Solution - Transform your LC duplex patchcord into an Environmental Connector



LC Field offers an easy system to upgrade from a standard to an environmental LC duplex connector with no cabling operation for installation in field. Based on MIL-DTL-38999 series III type, plugs and receptacles are mated thanks to a Tri-Start thread coupling mechanism.

Main features

Main characteristics:

- Thread coupling, MIL-DTL-38999 series III type
- Shell size 19
- The LC Field offers an easy system to upgrade from a standard to an environmental LC.
- Sealed against fluids and dust (IP68)
- Shock, vibration proof

With the patented RJStop® system you can use a standard LC duplex patchcord in a metallic plug which will protect it from shocks, dust and fluids.

No hazardous on-field cabling!

Mechanical characteristics:

- Number of Channels: 2
- Compatible with LC duplex connectors (PC and APC)
- Typical Insertion Loss: 0,5dB in MultiMode and SingleMode
- Durability 500 mating/unmating cycles (changes for <0,2 dB)

Environmental protection :

- Material and platings:
 - 48h - Aluminium shell with Nickel plating ✓
 - 500h - Aluminium shell with Black zinc nickel plating ✓
 - 500h - Aluminium shell with Olive drab cadmium plating ✓
 - 500h - Marine bronze shell ✓
- Operating temperature: -40°C to +85°C (-40°F to 185°F)

✓ : RoHS compliant



Markets & Applications



Railways



Base station



Military
Communication

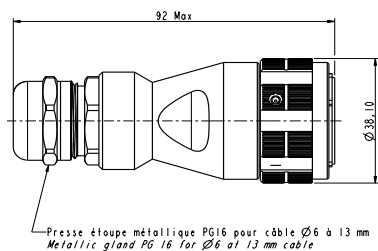


Naval

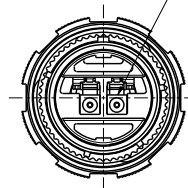
Plug

Plug – Shell type 6M

Part number type: **LCFTV 6M X X X**



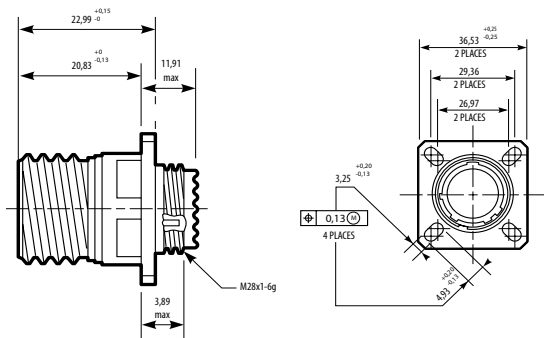
Connecteur LC Duplex (Non fourni)
 LC Duplex connector (Not supplied)



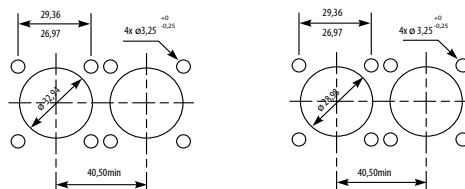
Receptacles

Square flange receptacle – Shell type 2

Part number type: **LCFTV 2 X X X**

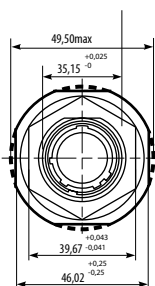
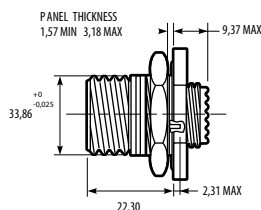


Panel Drilling

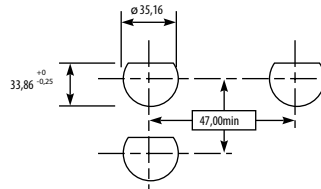


Jam nut receptacle – Shell type 7

Part number type: **LCFTV 7 X X X**

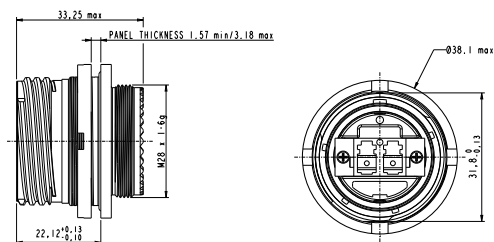


Panel Drilling

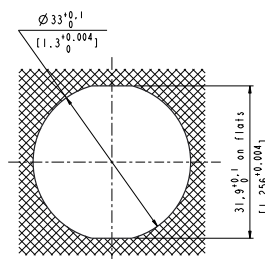


Reduced flange receptacle – Jam nut shell type 7m nut shell type 19

Part number type: **LCFTV 7 X X X F312**



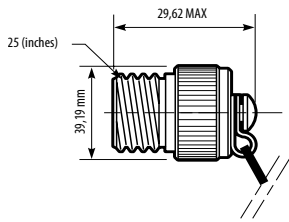
Panel Drilling



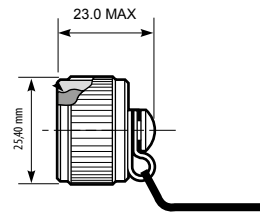
Accessories

Protective caps

Plug caps



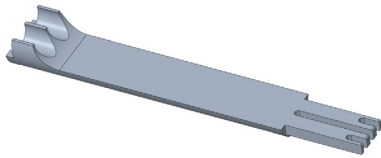
Receptacle caps



LC Field Tools

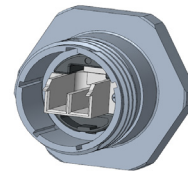
Mounting tools

LCFTV MO TOOL: LC FIELD Mounting tools

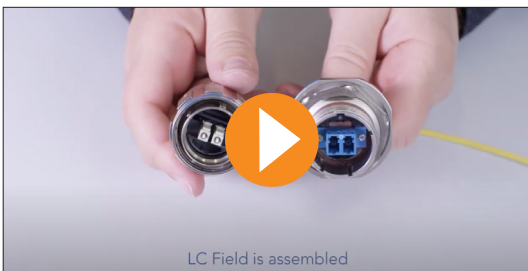


Dismounting tools

LCFTV DM TOOL: LC FIELD Dismounting tools (To dismount the LC you need to use both dismounting and mounting tools)



Assembly video



Scan & Discover !



LC FIELD

How to order - Connectors

1.	2.	3.	4.	5.	6.
Series	Shell type	Cable type	Shell finish	Polarization	Deviation
LCF TV	6M	D	N	N	F312

1. Series

LCF TV	Optical connector type
--------	------------------------

2. Shell type

Plug	Plug - Compatible for all LC PC and APC Duplex	
	6M	Plug with metal backshell and metal PG clamp
Compatible for all LC PC Duplex (adapter blue color)		
Receptacle without backshell	2	Square flange receptacle
	7	Jam Nut receptacle
	Compatible for all LC APC Duplex (adapter green color)	
	2A	Square flange receptacle
7A	Jam nut receptacle	

3. Cable type

Only for plug	Cable gland			
Cable type	ø 1,6 mm	ø 2 mm	ø 2,8 mm	ø 6 to 13 mm
Flat duplex cable	D:	F:	H:	
Duplex zipcord	E:	G:	I:	
Tactical cable				J:
T	Flat duplex cable for 1,6 mm - 2 mm - 2,8 mm + Duplex zipcord for 1,6 mm - 2 mm - 2,8 mm			

Only for receptacle (no backshell available for RECEPTACLE)	
0	Receptacle without backshell

4. Shell finish

N	Nickel plated ✓
G	Olive drab cadmium
B	Bronze ✓
ZN	Black zinc nickel ✓
Z	Vert zinc cobalt ✓

✓ RoHS compliant

5. Polarization

N	Normal or A / B / C / D / E
---	-----------------------------

6. Deviation (only for receptacle)

F312	Reduced flange
F311	Reduced flange with safety castle nut

How to order - Caps

1.	2.	3.	4.	5.	6.
Cap Series	Protective Cap type	Wire type	Series	Shell finish	Shell size
B	EC	N	TV	W	19

1. Cap Series

B	Cap Series
---	------------

2. Protective cap type

EC	For square flange receptacle
ER	For jam nut receptacle
F	For plug

3. Wire type

N	Nylon cord
Blank	Metallic chain

4. Series

TV	Series
----	--------

5. Shell finish

B	Bronze ✓
F	Electroless nickel plated, aluminium version ✓
W	Olive drab cadmium plated, aluminium version
ZN	Black zinc nickel ✓

6. Shell size

19	Corresponding connector shell size
----	------------------------------------

Requested information to order LC Field Patchcord

Type of connector: Male /Female
 Type of fiber: 50/125, 62,5/125, 9/125
 Patchcord length: ex 10.5m
 Drawing: description of the product
 Contact us for other configuration.

Tools informations

Mounting Tools:
 LCFTV MO TOOL: LC FIELD Mounting tools
Dismounting Tools:
 LCFTV DM TOOL: LC FIELD Dismounting tools
 (To dismount the LC you need to use both dismounting and mounting tools)