



# ENGINEERING LABORATORY

# Amphenol SOCAPEX

## LABORATORY



11 technicians & engineers  
2 PhD students



Controlled environmental conditions



Multiple test capabilities: dimensional, electrical, environmental & mechanical

## METROLOGY / CALIBRATION



- Over 8500 equipments (80% verified internally)
- Calibration capabilities in many fields: dimensional, force, electrical, thermal

## DID YOU KNOW ?



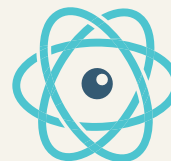
➤ The technology laboratory is certified by the U.S. Department of Defense Logistics Agency for calibrations, qualifications and maintenance of qualifications for standard products.

## TESTS / QUALIFICATIONS



- Integrated test facility, certified by DLA
- Climatic
- Mechanics
- Electrical

## TECHNOLOGICAL RESEARCH



- Material expertise:
  - Surface coatings
  - Metals
  - Plastics
- High-speed transmission
- High voltage



➤ The lab is equipped with a Scanning Electron Microscope to obtain high-resolution images of the surface of a material down to the nanoscale and to identify its elementary composition.